



**Carlson
Land
Services, Inc.**

Autauga County – 65 acres +/-

Offered by:

Eddie Carlson

334-270-1291 (Office)

334-201-5599 (Cell)

<http://www.carlsonlandservices.com/>

ecarlson@carlsonlandservices.com



**Carlson
Land**

Services, Inc. POST OFFICE BOX 241272 – MONTGOMERY, ALABAMA 36124 – 334.270.1291

Autauga County – 65 acres +/-

Location: Southwest of Billingsley, AL

This property features:

- 65 acres of beautiful land and timber.
- The property is stocked with mature pine approximately 17 years old, and ready to be thinned.
- The property has excellent wildlife habitat and is home to deer, turkey, and many nongame species.
- The property is an excellent hunting and timber investment tract.
- The property has frontage on County Road 1.
- There are utilities available on the property.
- This property is just off of Highway 82 Northwest of Montgomery and Prattville.

Price: \$ 146,250.00

Contact: Eddie Carlson

334-270-1291 (Office)

334-201-5599 (Cell)

icarlson@carlsonlandservices.com

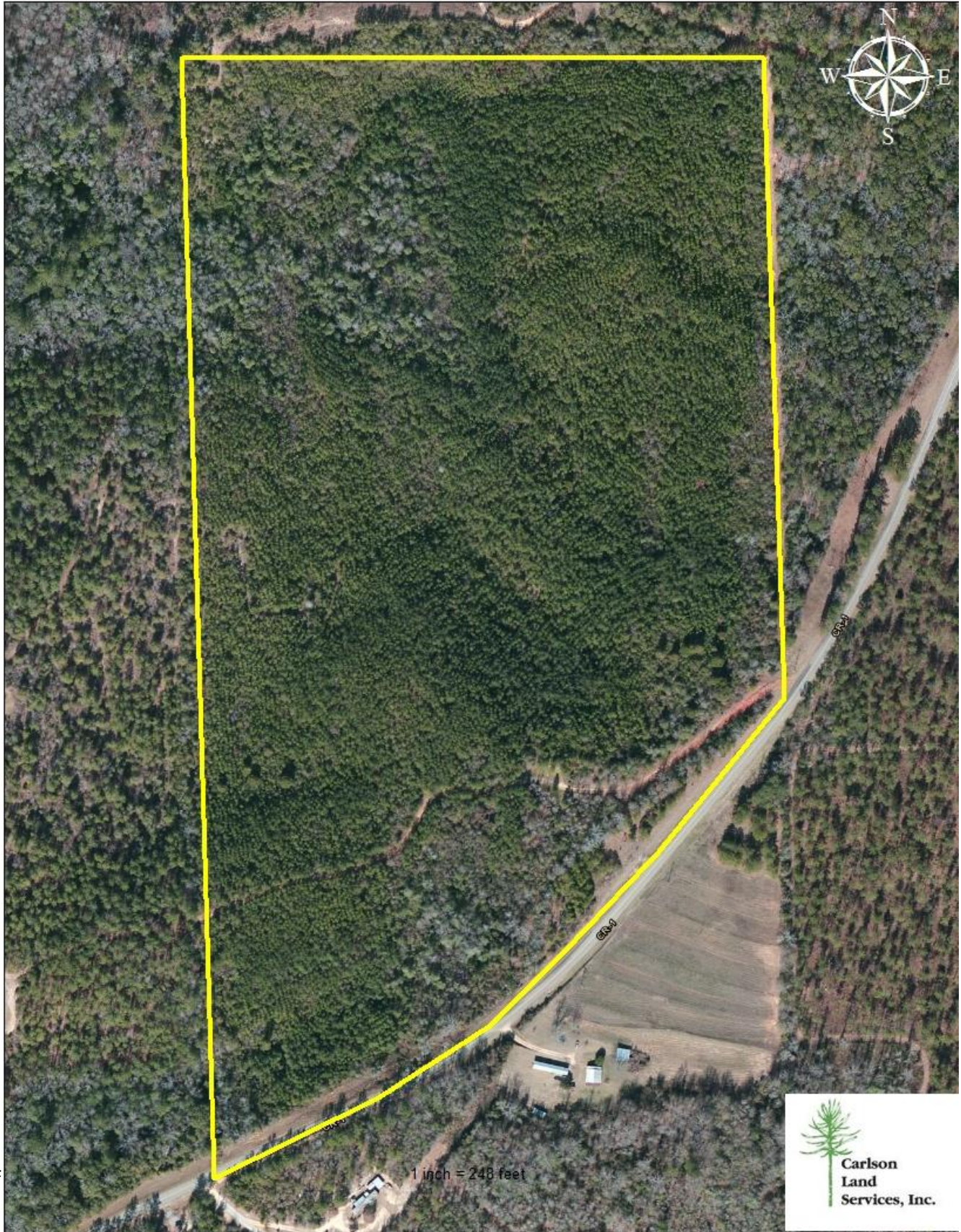
Driving Directions:

See maps. Shown by appointment only. Gates are locked- please call agent.



**Carlson
Land**

Services, Inc. POST OFFICE BOX 241272 – MONTGOMERY, ALABAMA 36124 – 334.270.1291



1 inch = 248 feet

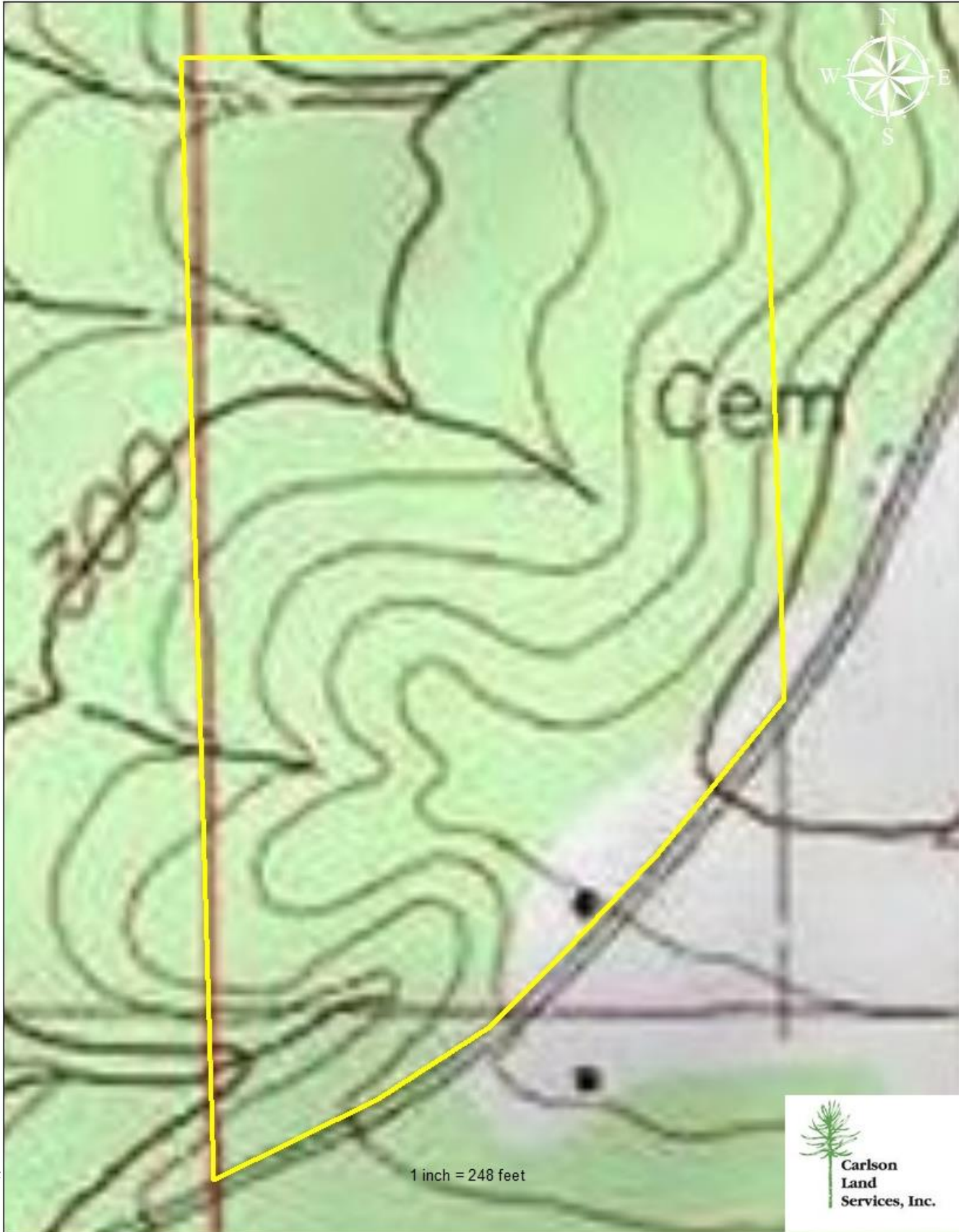


**Carlson
Land
Services, Inc.**



**Carlson
Land**

Services, Inc. POST OFFICE BOX 241272 – MONTGOMERY, ALABAMA 36124 – 334.270.1291



**Carlson
Land
Services, Inc.**