



**Carlson  
Land  
Services, Inc.**

**Macon County – 167 acres +/-**

---

***Offered by:***

Eddie Carlson

334-270-1291 (Office)

334-201-5599 (Cell)

<http://www.carlsonlandservices.com/>

[ecarlson@carlsonlandservices.com](mailto:ecarlson@carlsonlandservices.com)



**Carlson  
Land**

**Services, Inc.** POST OFFICE BOX 241272 – MONTGOMERY, ALABAMA 36124 – 334.270.1291

## Macon County – 167 acres +/-

**Location:** 20 miles east of Montgomery near the Tallassee Exit on I-85

**This property features:**

- 167 acres of beautiful timberland with good access.
- The property has two creeks running through the property.
- The property consists of mature natural pine and hardwood timberland.
- This property has excellent habitat for wildlife including deer, turkey, and waterfowl.
- This property has a beautiful cypress swamp in the northwest corner with excellent duck habitat.
- The property has a railroad running across the northern end of the tract.
- This property is in close proximity to Montgomery and Auburn.

**Price:** \$ 392,450.00

**Contact:** Eddie Carlson

334-270-1291 (Office)

334-201-5599 (Cell)

[ecarlson@carlsonlandservices.com](mailto:ecarlson@carlsonlandservices.com)

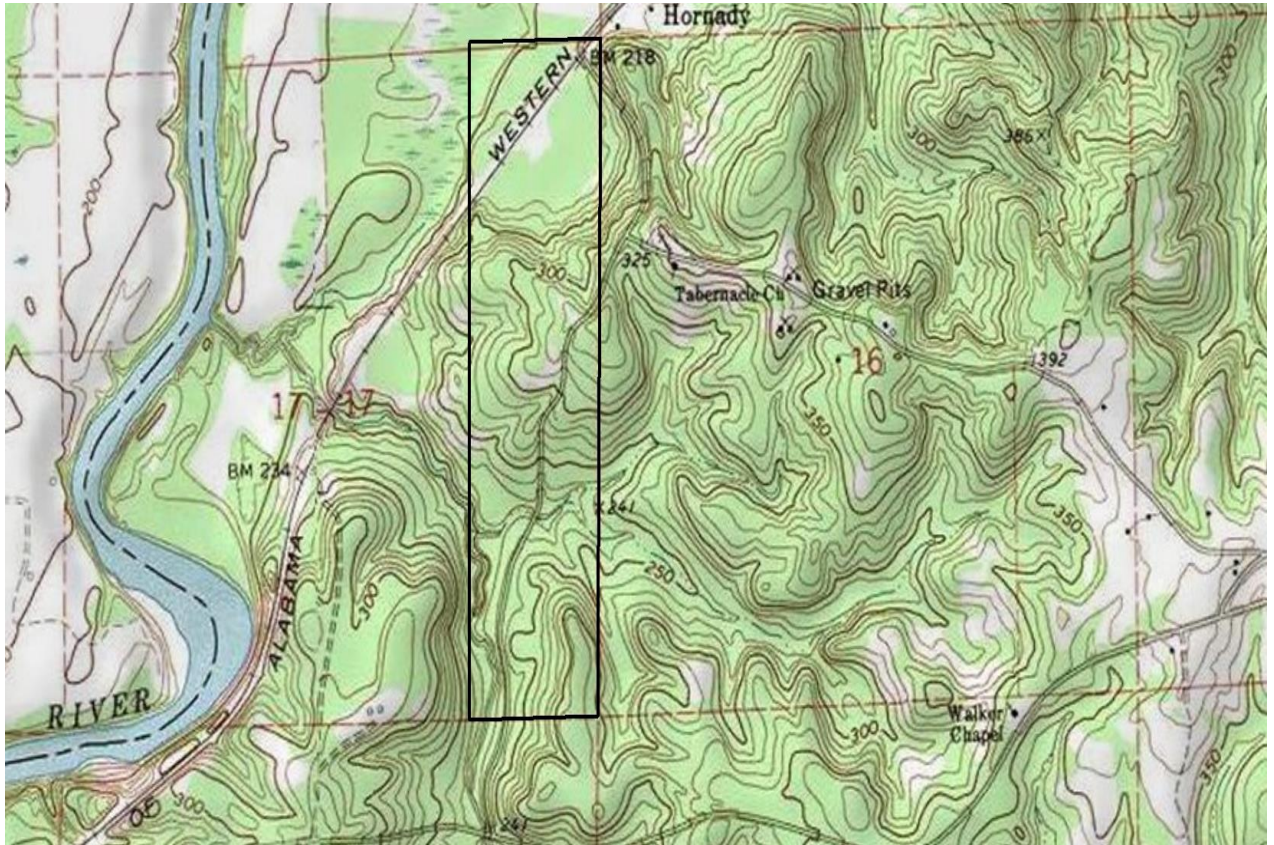
**Driving Directions:**

See maps. Shown by appointment only. Gates are locked- please call agent.



**Carlson  
Land**

**Services, Inc.** POST OFFICE BOX 241272 – MONTGOMERY, ALABAMA 36124 – 334.270.1291







**Carlson  
Land**

**Services, Inc.** POST OFFICE BOX 241272 – MONTGOMERY, ALABAMA 36124 – 334.270.1291





**Carlson  
Land**

**Services, Inc.** POST OFFICE BOX 241272 – MONTGOMERY, ALABAMA 36124 – 334.270.1291







**Carlson  
Land**

**Services, Inc.** POST OFFICE BOX 241272 – MONTGOMERY, ALABAMA 36124 – 334.270.1291







**Carlson  
Land**

**Services, Inc.** POST OFFICE BOX 241272 – MONTGOMERY, ALABAMA 36124 – 334.270.1291







**Carlson  
Land**

**Services, Inc.** POST OFFICE BOX 241272 – MONTGOMERY, ALABAMA 36124 – 334.270.1291

