



Montgomery County - 247 acres +/-

*Offered by:*

Eddie Carlson

334-270-1291 (Office)

334-201-5599 (Cell)

<http://www.carlsonlandservices.com/>

[ecarlson@carlsonlandservices.com](mailto:ecarlson@carlsonlandservices.com)



**Carlson  
Land**

**Services, Inc.** POST OFFICE BOX 241272 – MONTGOMERY, ALABAMA 36124 – 334.270.1291

## Montgomery County – 247 acres +/-

**Location:** West of Montgomery, AL on Old Selma Road

**This property features:**

- 247 acres of beautiful land and timber with close proximity to Montgomery.
- The property has approximately 100 acres of planted pines that were planted in 1997 and approximately 10 acres of pastureland.
- The property has great access from County Road 54 (Old Selma Road) and is located only 10 miles from Montgomery.
- The property has an abundance of wildlife on the property with excellent habitat for a wide range of animals.
- The property has an excellent water source with Tacoma Creek meandering along the Northern border of the property.
- This property is an excellent investment/recreation tract and has many good home sites and utilities are available.

**Price:** \$ 617,500.00

**Contact:** Eddie Carlson

334-270-1291 (Office)

334-201-5599 (Cell)

[ecarlson@carlsonlandservices.com](mailto:ecarlson@carlsonlandservices.com)

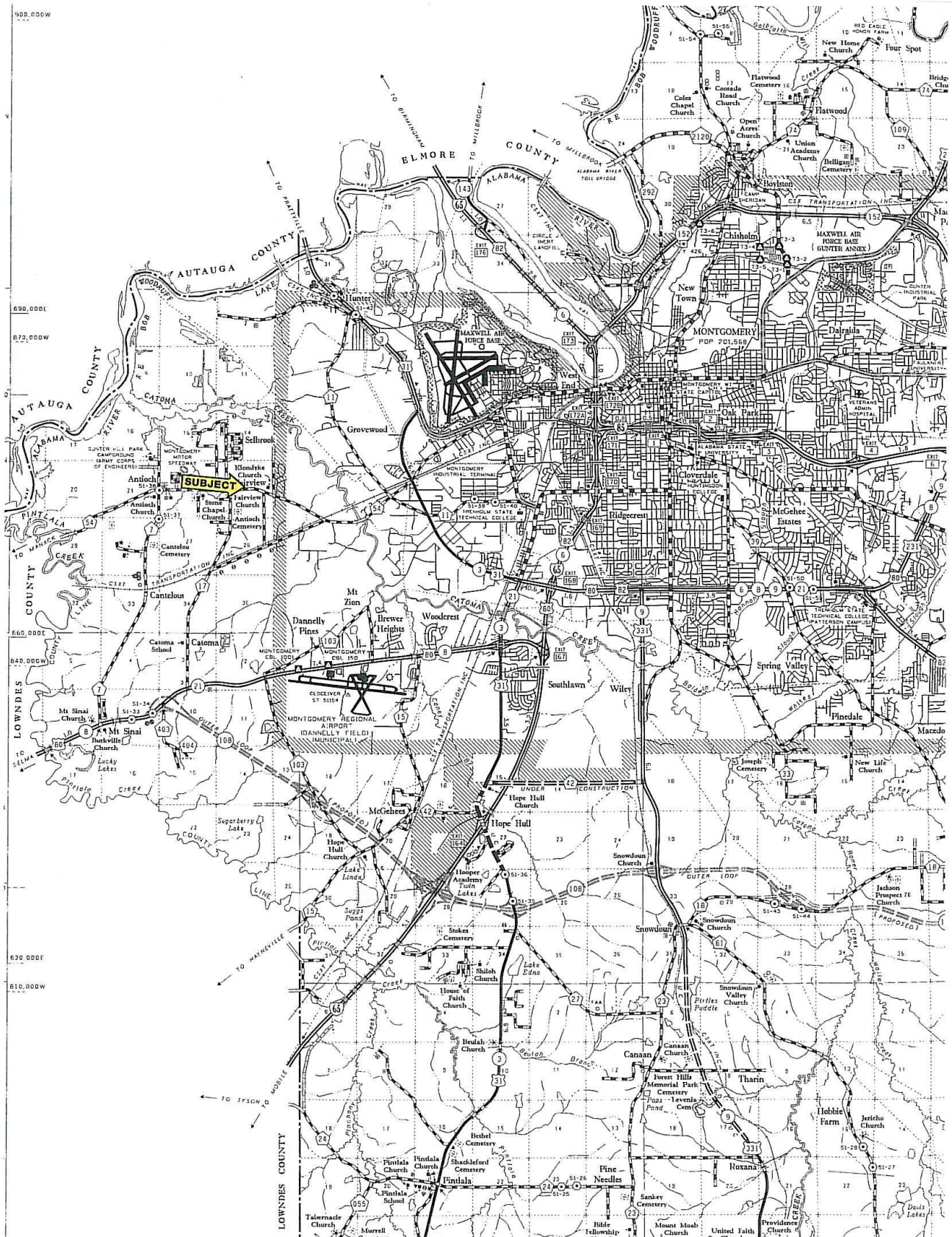
**Driving Directions:**

See maps. Shown by appointment only. Gates are locked- please call agent.



**Carlson  
Land  
Services, Inc.**

POST OFFICE BOX 241272 – MONTGOMERY, ALABAMA 36124 – 334.270.1291

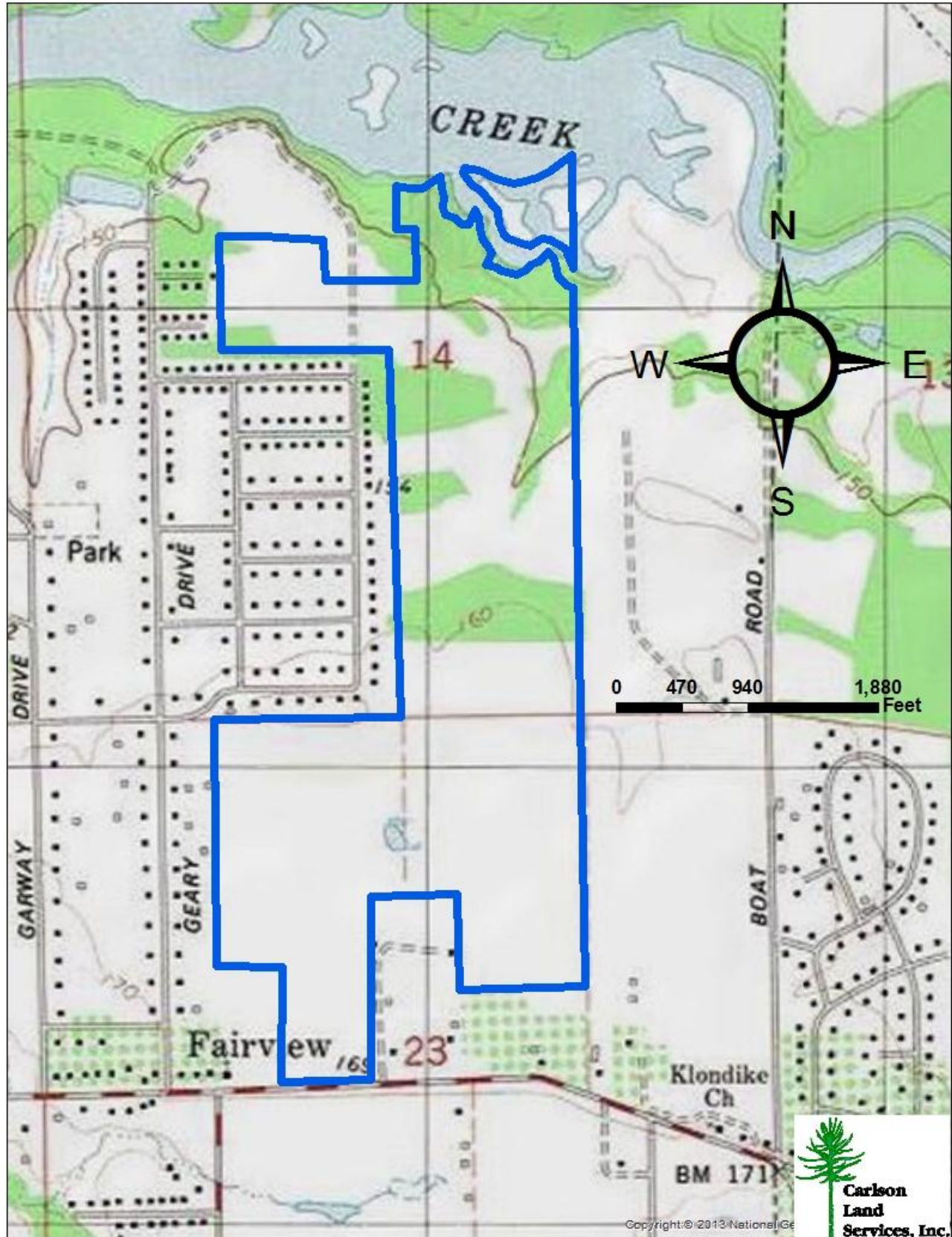




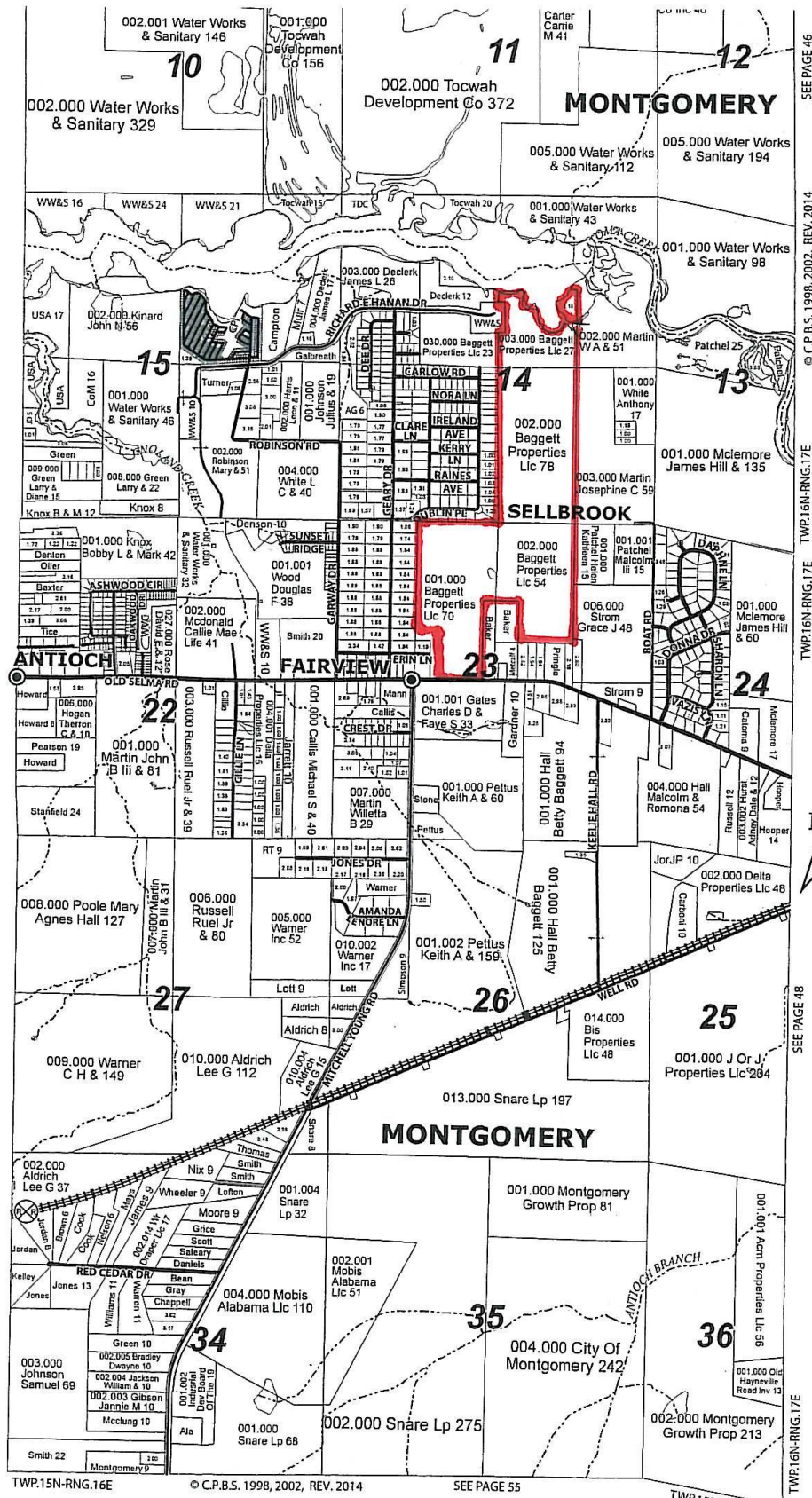


**Carlson  
Land**

**Services, Inc.** POST OFFICE BOX 241272 – MONTGOMERY, ALABAMA 36124 – 334.270.1291



**Carlson  
Land  
Services, Inc.**

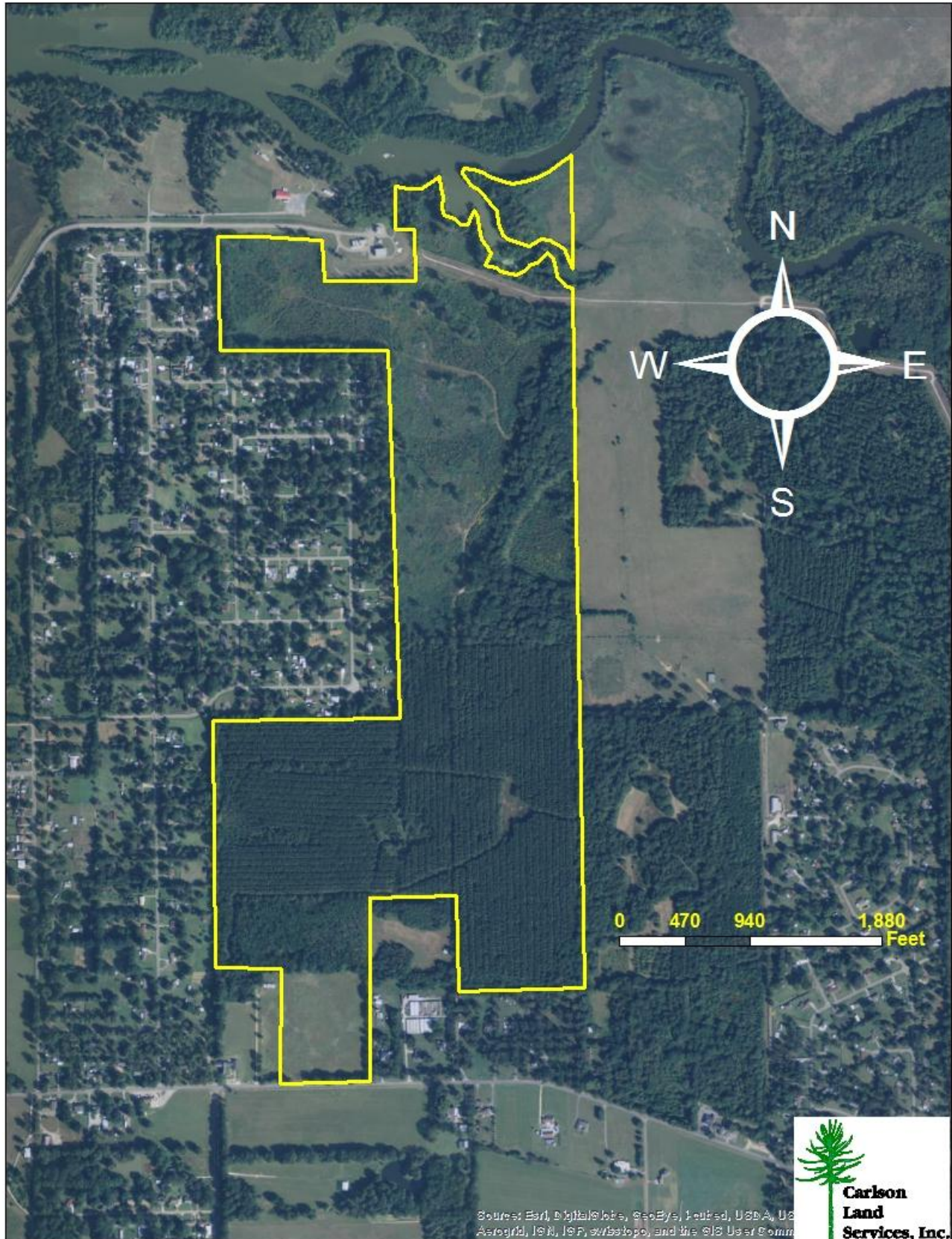






**Carlson  
Land**

**Services, Inc.** POST OFFICE BOX 241272 – MONTGOMERY, ALABAMA 36124 – 334.270.1291



Sources: Esri, DigitalGlobe, GeoEye, IGN, USDA, US  
Aerogrid, IGN, IGF, swisstopo, and the GIS User Comm



**Carlson  
Land  
Services, Inc.**





**Carlson  
Land**

**Services, Inc.** POST OFFICE BOX 241272 – MONTGOMERY, ALABAMA 36124 – 334.270.1291





**Carlson  
Land**

**Services, Inc.** POST OFFICE BOX 241272 – MONTGOMERY, ALABAMA 36124 – 334.270.1291







**Carlson  
Land**

**Services, Inc.** POST OFFICE BOX 241272 – MONTGOMERY, ALABAMA 36124 – 334.270.1291







**Carlson  
Land**

**Services, Inc.** POST OFFICE BOX 241272 – MONTGOMERY, ALABAMA 36124 – 334.270.1291







**Carlson  
Land**

**Services, Inc.** POST OFFICE BOX 241272 – MONTGOMERY, ALABAMA 36124 – 334.270.1291







**Carlson  
Land**

**Services, Inc.** POST OFFICE BOX 241272 – MONTGOMERY, ALABAMA 36124 – 334.270.1291

