



**Carlson
Land
Services, Inc.**

Coosa County – 590 acres +/-

Offered by:

Eddie Carlson

334-270-1291 (Office)

334-201-5599 (Cell)

<http://www.carlsonlandservices.com/>

ecarlson@carlsonlandservices.com



**Carlson
Land**

Services, Inc. POST OFFICE BOX 241272 – MONTGOMERY, ALABAMA 36124 – 334.270.1291

Coosa County – 590 acres +/-

Location: Northwest of Rockford, AL

This property features:

- 590 acres of beautiful land and timber.
- There is more than one mile of frontage on Hatchet Creek.
- This property has a rare view of Alabama's infamous Cahaba lilies on Hatchet Creek.
- The property is heavily stocked with mature pine and hardwood timber and has an excellent internal road system. The property has excellent wildlife habitat and is home to deer, turkey, and many nongame species.
- The property has flat to rolling to hilly topography with elevation changes of over 300 feet in some portions of the property. The views are spectacular.
- Chipco creek also runs through this property.
- There is a bass pond with a nice pier on the property.
- There is a 40X60 foot pole barn on the property.
- This property is an excellent recreation tract.
- There is approximately 46 acres of mature 22-year-old planted pine as well as another 46 acres of one year old planted longleaf pine.
- There are several green fields on the property with nice shooting houses.
- There is a full sized shipping container used for storage on the property.

Price: \$ 1,179,410.00 or \$1,999.00/Acre

Contact: Eddie Carlson

334-270-1291 (Office)

334-201-5599 (Cell)

ecarlson@carlsonlandservices.com

Driving Directions:

See maps. Shown by appointment only. Gates are locked- please call agent.



**Carlson
Land**

Services, Inc. POST OFFICE BOX 241272 – MONTGOMERY, ALABAMA 36124 – 334.270.1291





**Carlson
Land**

Services, Inc. POST OFFICE BOX 241272 – MONTGOMERY, ALABAMA 36124 – 334.270.1291





**Carlson
Land**

Services, Inc. POST OFFICE BOX 241272 – MONTGOMERY, ALABAMA 36124 – 334.270.1291





**Carlson
Land**

Services, Inc. POST OFFICE BOX 241272 – MONTGOMERY, ALABAMA 36124 – 334.270.1291





**Carlson
Land**

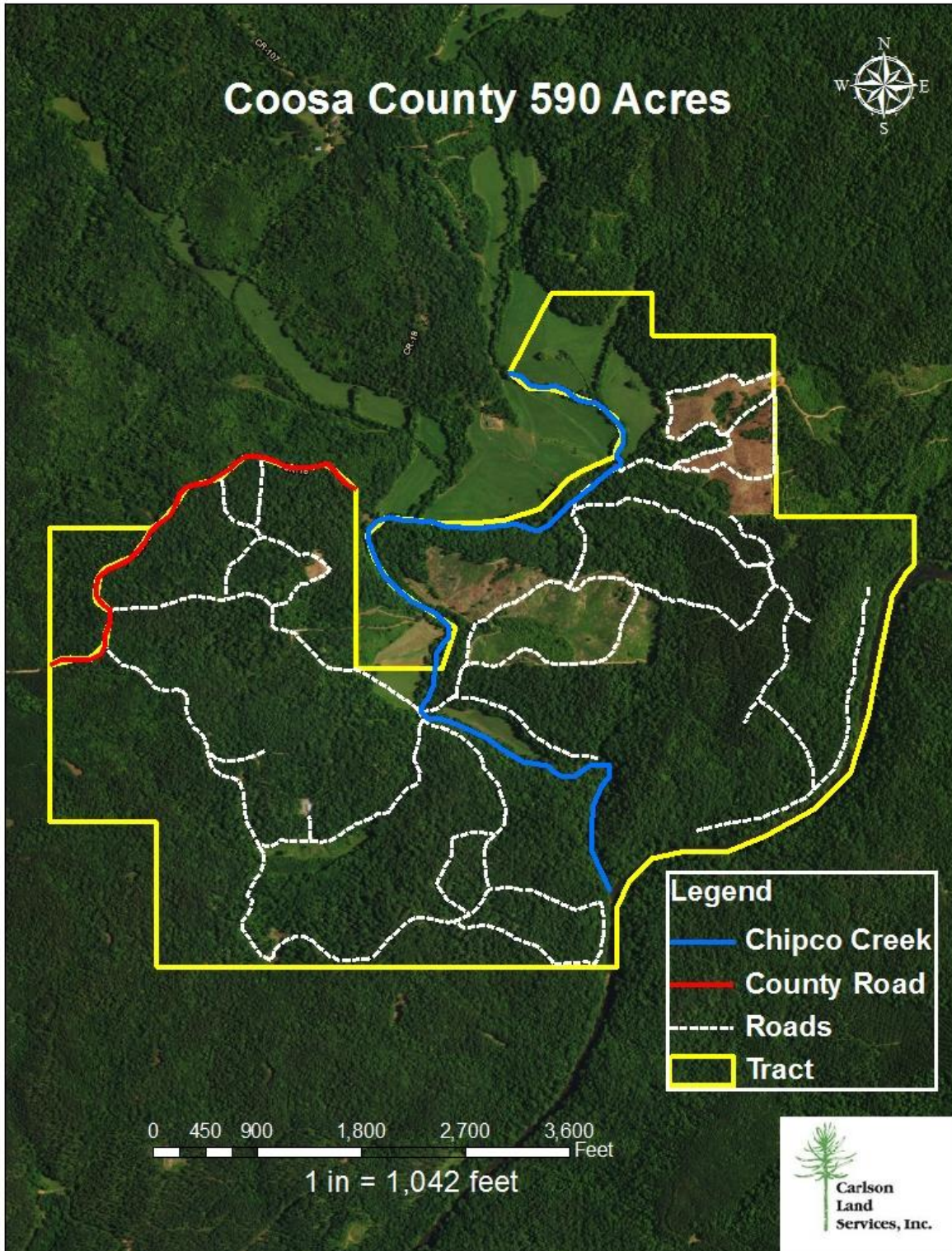
Services, Inc. POST OFFICE BOX 241272 – MONTGOMERY, ALABAMA 36124 – 334.270.1291





**Carlson
Land**

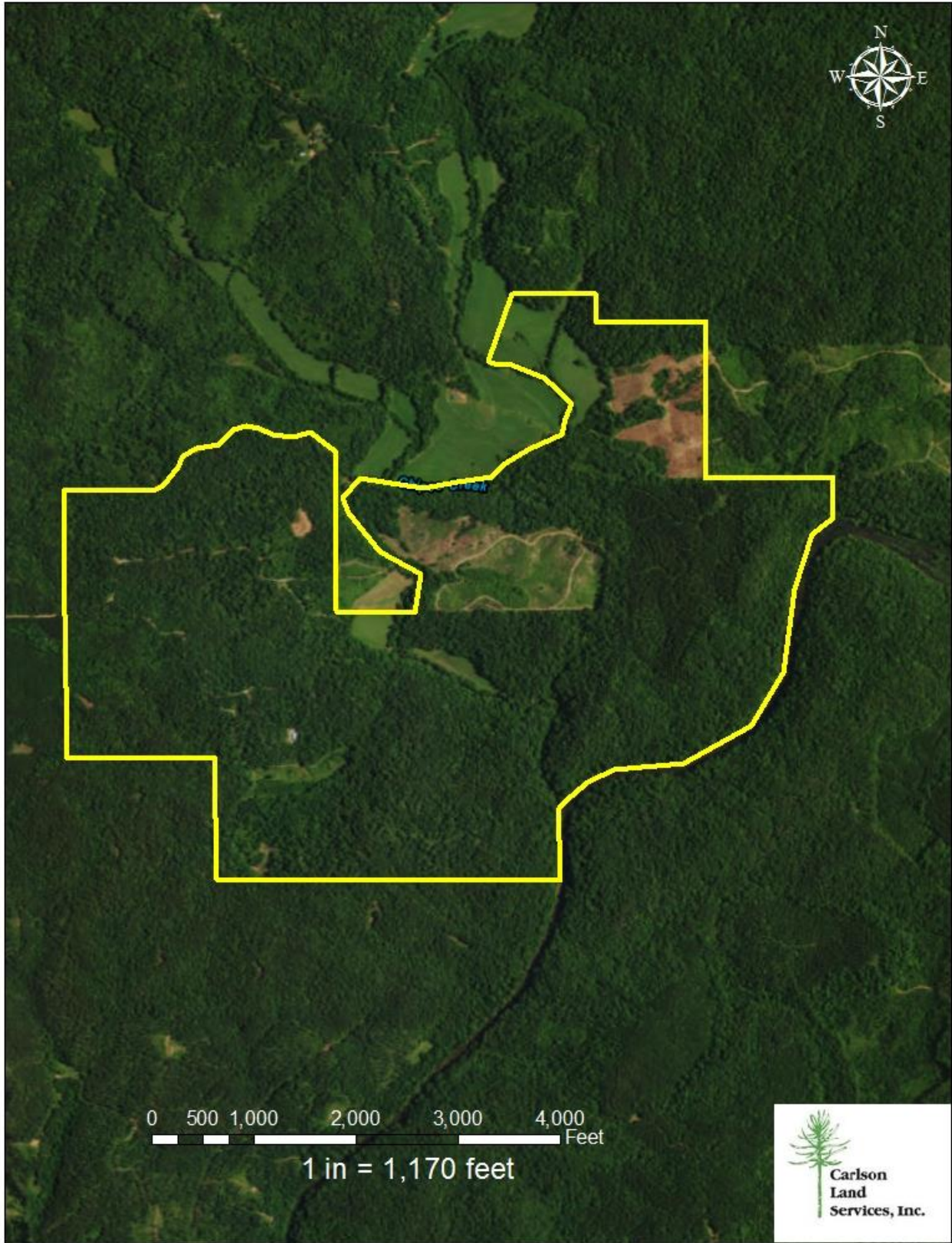
Services, Inc. POST OFFICE BOX 241272 – MONTGOMERY, ALABAMA 36124 – 334.270.1291





**Carlson
Land**

Services, Inc. POST OFFICE BOX 241272 – MONTGOMERY, ALABAMA 36124 – 334.270.1291





**Carlson
Land**

Services, Inc. POST OFFICE BOX 241272 – MONTGOMERY, ALABAMA 36124 – 334.270.1291

