



Butler County and Crenshaw County – 1,100 acres +/-

Offered by:

Eddie Carlson

334-270-1291 (Office)

334-201-5599 (Cell)

<http://www.carlsonlandservices.com/>

ecarlson@carlsonlandservices.com



**Carlson
Land**

Services, Inc. POST OFFICE BOX 241272 – MONTGOMERY, ALABAMA 36124 – 334.270.1291

Butler and Crenshaw County – 1,100 acres +/-

Location: Greenville, AL and Rutledge, AL

This property features:

- 1,100 acres of beautiful open land currently used for agriculture and livestock production.
- This highly productive farmland is well-kept and ready for use.
- There are many water sources on the property including a 40-acre lake and several smaller ones throughout.
- This property consists of four separate tracts along Highway 10 in East Butler County and West Crenshaw County within close proximity of one another.
- This land CAN BE DIVIDED.
- There is a large storage barn on the property.
- There are well maintained fences surrounding the property.
- Each available parcel has significant amounts of paved road frontage.
- The property has many great homesites.
- There are utilities available on the property.

Price: \$ 3,410,000.00

Contact: Eddie Carlson

334-270-1291 (Office)

334-201-5599 (Cell)

ecarlson@carlsonlandservices.com

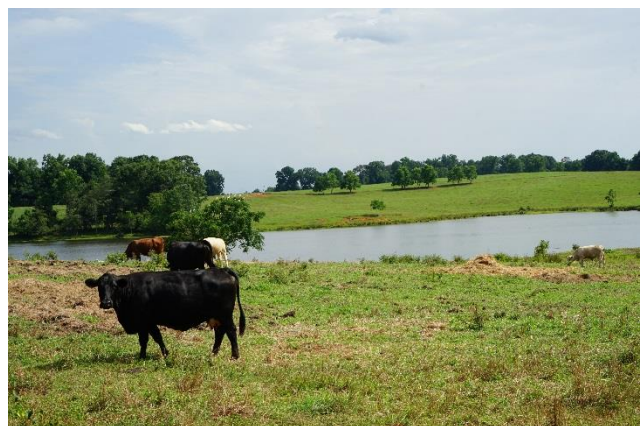
Driving Directions:

See maps. Shown by appointment only. Gates are locked- please call agent.



**Carlson
Land**

Services, Inc. POST OFFICE BOX 241272 – MONTGOMERY, ALABAMA 36124 – 334.270.1291



Beautiful open land currently used for agriculture and cattle production.



**Carlson
Land**

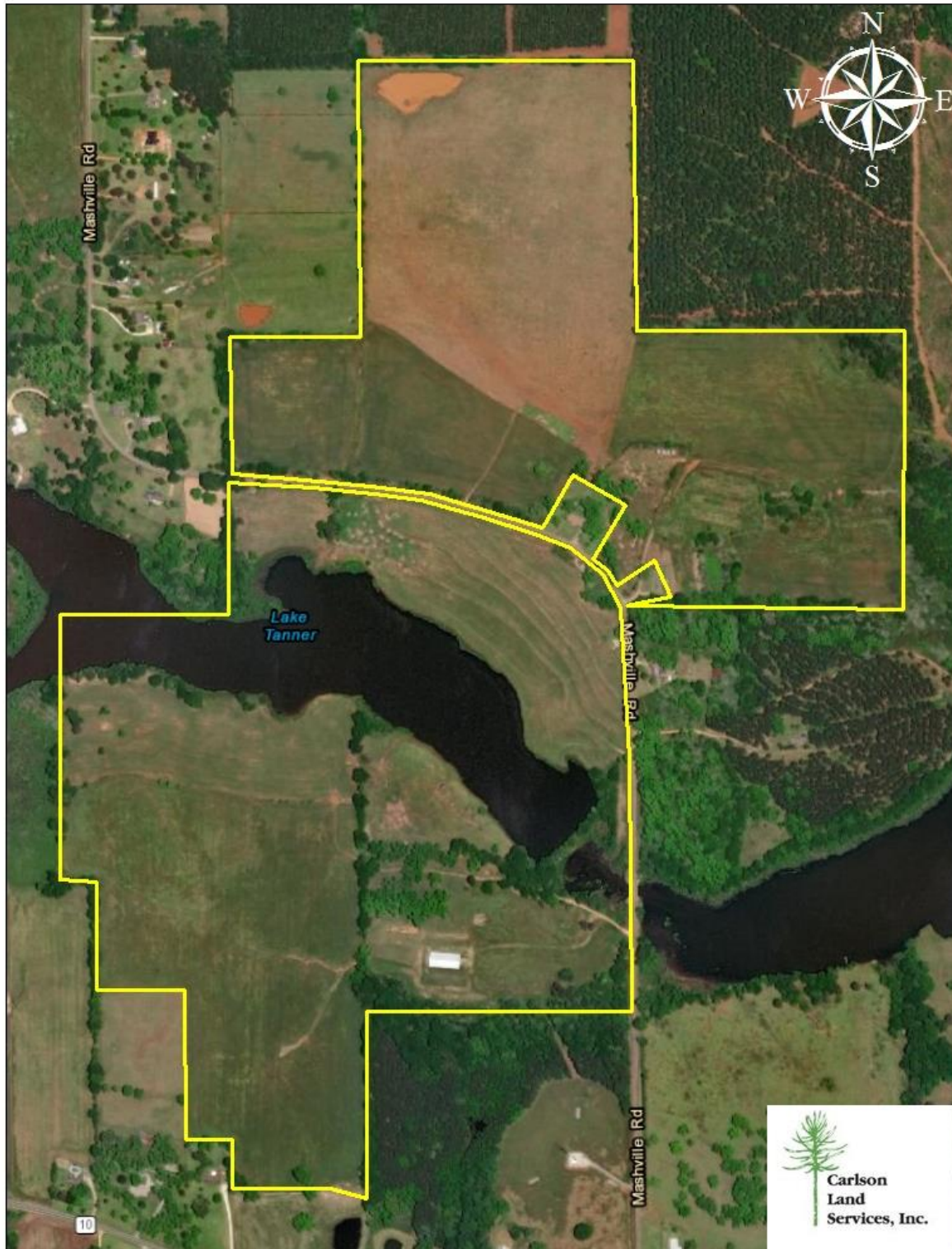
Services, Inc. POST OFFICE BOX 241272 – MONTGOMERY, ALABAMA 36124 – 334.270.1291





**Carlson
Land
Services, Inc.**

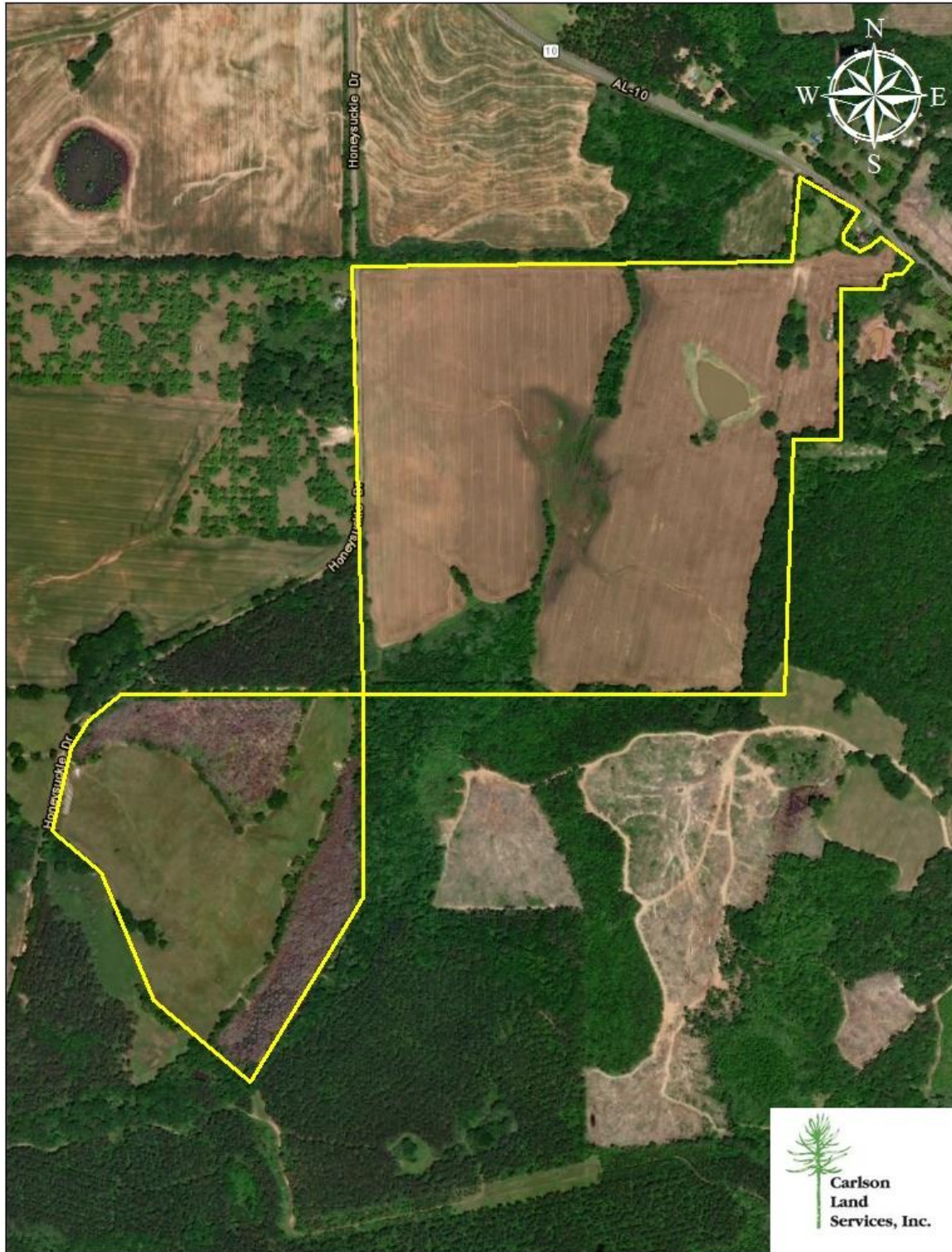
POST OFFICE BOX 241272 – MONTGOMERY, ALABAMA 36124 – 334.270.1291





**Carlson
Land
Services, Inc.**

POST OFFICE BOX 241272 – MONTGOMERY, ALABAMA 36124 – 334.270.1291



**Carlson
Land
Services, Inc.**



**Carlson
Land
Services, Inc.**

POST OFFICE BOX 241272 – MONTGOMERY, ALABAMA 36124 – 334.270.1291

