



**Carlson
Land
Services, Inc.**

Coosa County – 662.54 acres +/-

Offered by:

Eddie Carlson

334-270-1291 (Office)

334-201-5599 (Cell)

<http://www.carlsonlandservices.com/>

ecarlson@carlsonlandservices.com



**Carlson
Land**

Services, Inc. POST OFFICE BOX 241272 – MONTGOMERY, ALABAMA 36124 – 334.270.1291

Coosa County – 662.54 acres +/-

Location: Northeast of Rockford, AL

This property features:

- 662.54 stunning acres of timberland in Rockford, Alabama.
- This property is heavily stocked with old growth pine and hardwood timber.
- These gorgeous woods consist of towering red oaks, white oaks, poplars, hickories, and much more.
- The property has ideal wildlife habitat and is home to deer, turkey, and many nongame species.
- The beautiful Jacks creek runs through this property.
- This tract has flat to rolling topography, with some hills on the north end of the property.
- There is a fishing pond on the south end of the tract.
- This rural Coosa county property would make a perfect recreational and timber investment.
- This property is centrally located between Montgomery, Birmingham, and Auburn.

Price: \$ 1,573,532.50

Contact: Eddie Carlson

334-270-1291 (Office)

334-201-5599 (Cell)

ecarlson@carlsonlandservices.com

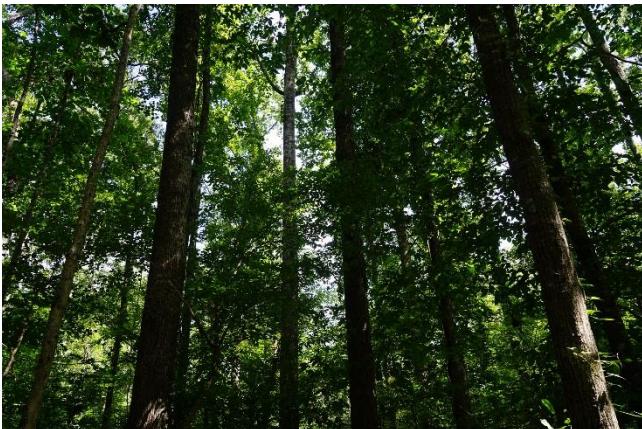
Driving Directions:

See maps. Shown by appointment only. Gates are locked- please call agent.



**Carlson
Land**

Services, Inc. POST OFFICE BOX 241272 – MONTGOMERY, ALABAMA 36124 – 334.270.1291





**Carlson
Land**

Services, Inc. POST OFFICE BOX 241272 – MONTGOMERY, ALABAMA 36124 – 334.270.1291





**Carlson
Land
Services, Inc.**

POST OFFICE BOX 241272 – MONTGOMERY, ALABAMA 36124 – 334.270.1291

