



**Carlson
Land
Services, Inc.**

Montgomery County – 194 acres +/-

Offered by:

Eddie Carlson

334-270-1291 (Office)

334-201-5599 (Cell)

<http://www.carlsonlandservices.com/>

ecarlson@carlsonlandservices.com



**Carlson
Land**

Services, Inc. POST OFFICE BOX 241272 – MONTGOMERY, ALABAMA 36124 – 334.270.1291

Montgomery County – 194 acres +/-

Location: Mathews, Alabama

This property features:

- 194 acres of beautiful land and timber.
- This property is heavily stocked with mature hardwood timber.
- This property has significant timber income potential.
- The property has several beautiful creeks.
- This property has a well-maintained road system throughout the property.
- This Alabama blackbelt property has great deer, duck, and turkey hunting.
- This property is conveniently located on Highway 231 between Montgomery and Troy.

Price: \$ 543,200.00

Contact: Eddie Carlson

334-270-1291 (Office)

334-201-5599 (Cell)

ecarlson@carlsonlandservices.com

Driving Directions:

See maps. Shown by appointment only. Gates are locked- please call agent.



**Carlson
Land**

Services, Inc. POST OFFICE BOX 241272 – MONTGOMERY, ALABAMA 36124 – 334.270.1291



Several Nice food plots and shooting houses on this tract.



**Carlson
Land**

Services, Inc. POST OFFICE BOX 241272 – MONTGOMERY, ALABAMA 36124 – 334.270.1291



Mature hardwoods and plentiful white oaks makes this an outdoorsman's paradise.



**Carlson
Land**

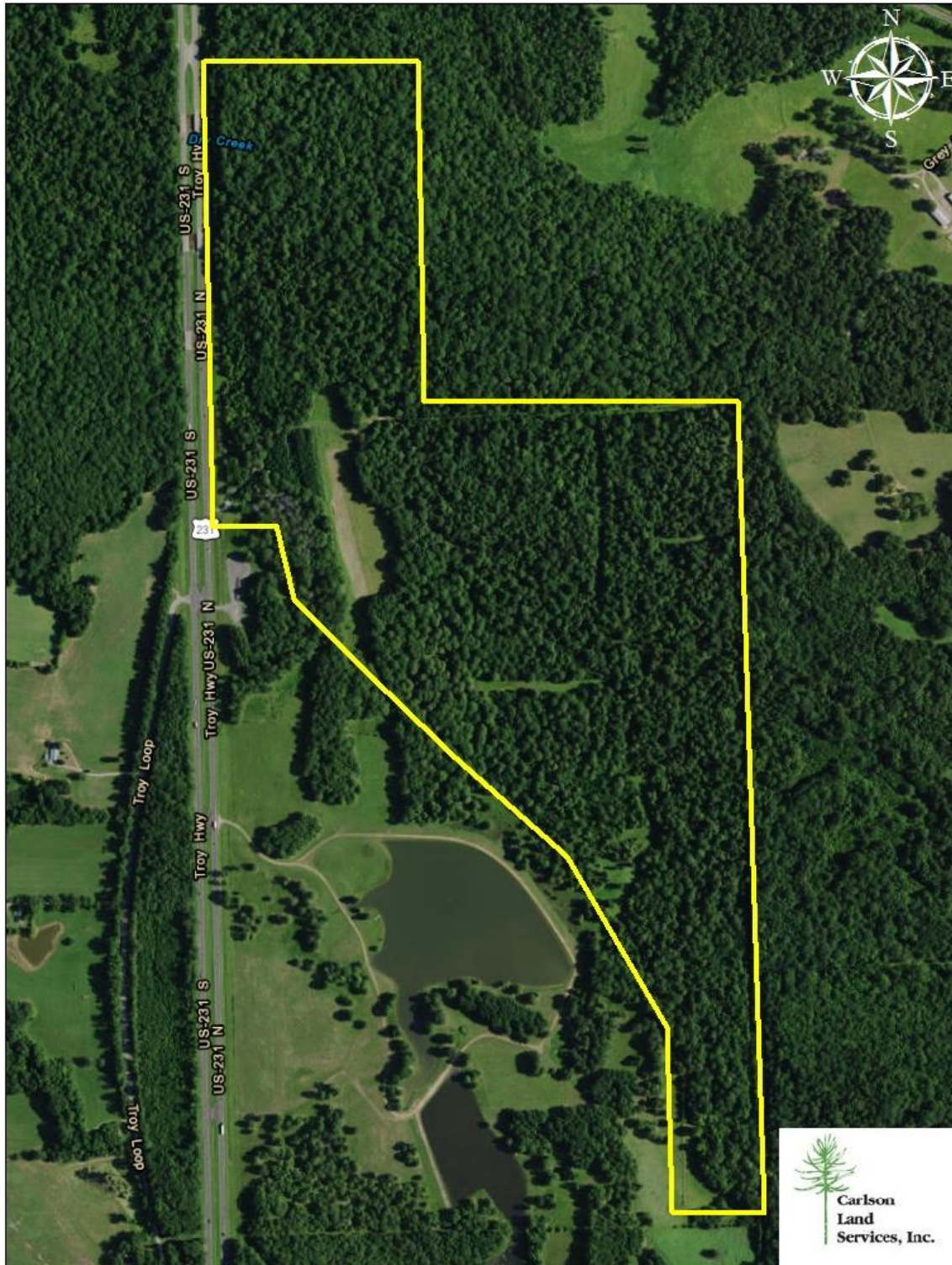
Services, Inc. POST OFFICE BOX 241272 – MONTGOMERY, ALABAMA 36124 – 334.270.1291





**Carlson
Land
Services, Inc.**

POST OFFICE BOX 241272 – MONTGOMERY, ALABAMA 36124 – 334.270.1291





**Carlson
Land**

Services, Inc. POST OFFICE BOX 241272 – MONTGOMERY, ALABAMA 36124 – 334.270.1291