



**Carlson  
Land  
Services, Inc.**

Autauga County – 65 acres +/-

*Offered by:*

Eddie Carlson

334-270-1291 (Office)

334-201-5599 (Cell)

<http://www.carlsonlandservices.com/>

[ecarlson@carlsonlandservices.com](mailto:ecarlson@carlsonlandservices.com)



**Carlson  
Land**

**Services, Inc.** POST OFFICE BOX 241272 – MONTGOMERY, ALABAMA 36124 – 334.270.1291

## Autauga County – 65 acres +/-

**Location:** Southwest of Billingsley, AL

### **This property features:**

- 65 acres of beautiful land and timber.
- The property is stocked with mature pine approximately 18 years old, and ready to be thinned.
- The property has excellent wildlife habitat and is home to deer, turkey, and many nongame species.
- The property is an excellent hunting and timber investment tract.
- The property has frontage on County Road 1.
- There are utilities available on the property.
- This property is just off of Highway 82 Northwest of Montgomery and Prattville.

**Price:** \$ 117,000.00

**Contact:** Eddie Carlson

334-270-1291 (Office)

334-201-5599 (Cell)

[lcarlson@carlsonlandservices.com](mailto:lcarlson@carlsonlandservices.com)

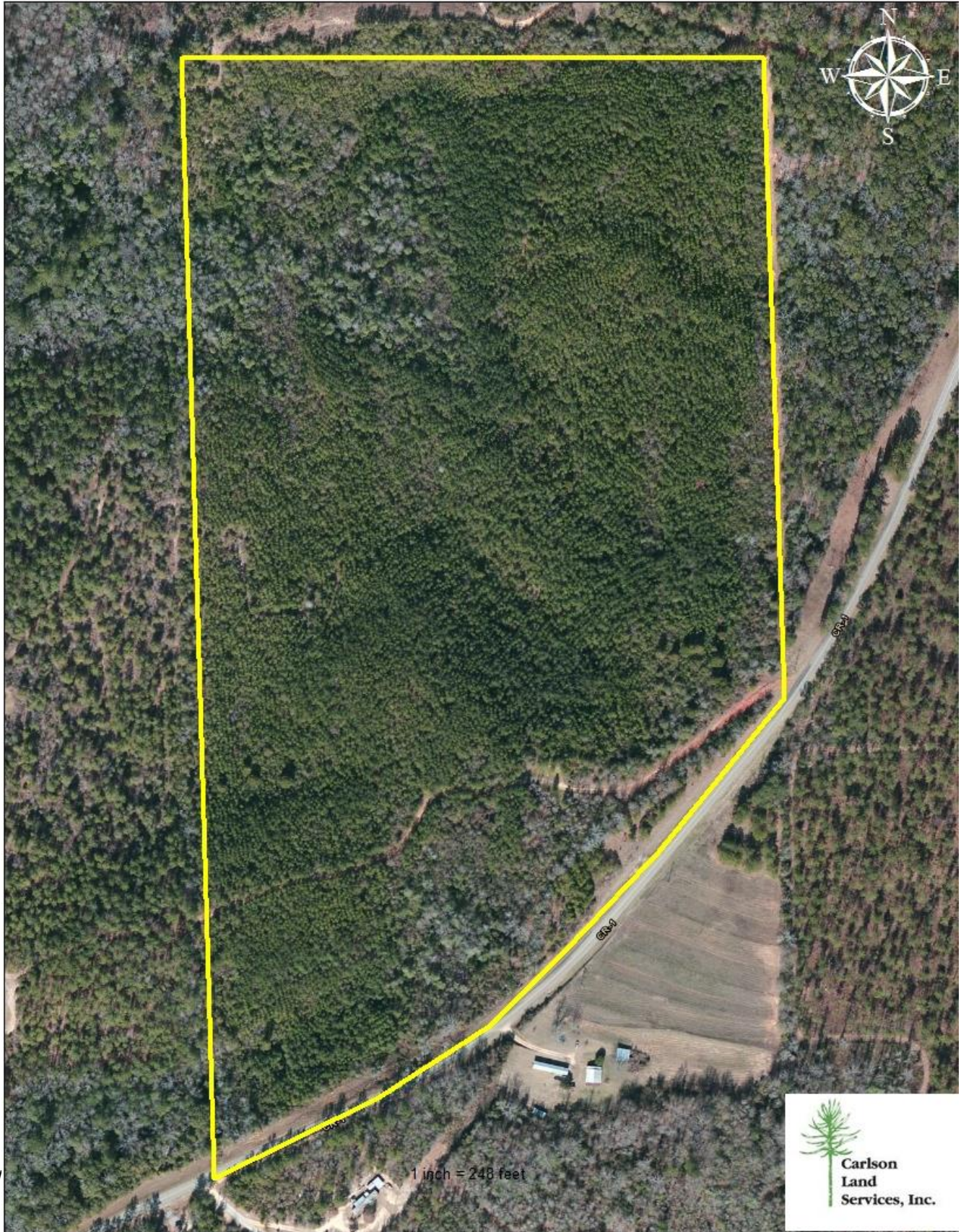
### **Driving Directions:**

See maps. Shown by appointment only. Gates are locked- please call agent.



**Carlson  
Land**

**Services, Inc.** POST OFFICE BOX 241272 – MONTGOMERY, ALABAMA 36124 – 334.270.1291



1 inch = 248 feet

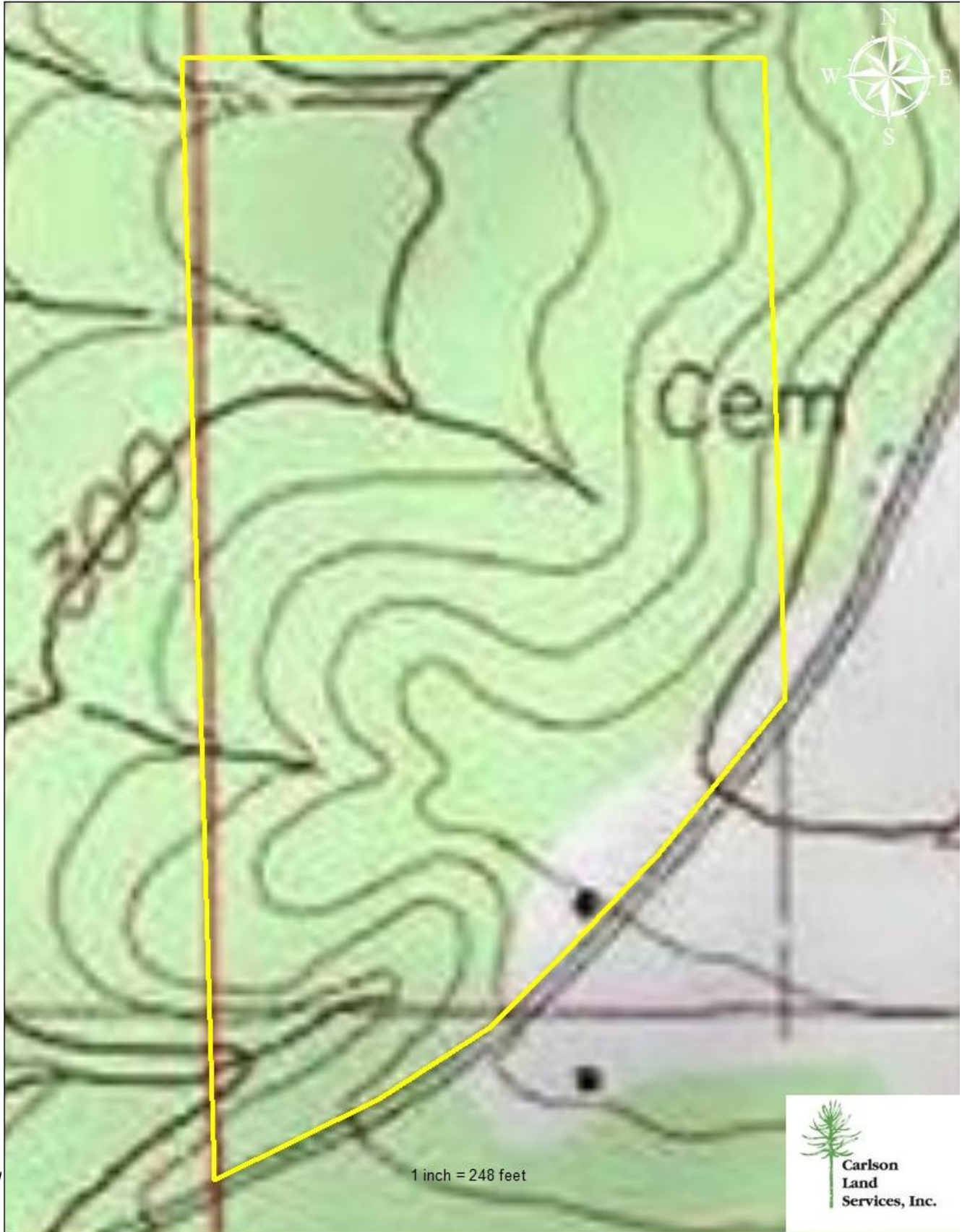


**Carlson  
Land  
Services, Inc.**



**Carlson  
Land**

**Services, Inc.** POST OFFICE BOX 241272 – MONTGOMERY, ALABAMA 36124 – 334.270.1291



V



**Carlson  
Land  
Services, Inc.**