



Pike County – 451 acres +/-

Offered by:

Eddie Carlson

334-270-1291 (Office)

334-201-5599 (Cell)

<http://www.carlsonlandservices.com/>

ecarlson@carlsonlandservices.com



**Carlson
Land**

Services, Inc. POST OFFICE BOX 241272 – MONTGOMERY, ALABAMA 36124 – 334.270.1291

Pike County – 451 acres +/-

Location: Troy, AL

This property features:

- 451 acres of development land and timber.
- This property is an excellent development tract close to Troy, AL with frontage on State Highway 21.
- The Northern approximately 250 acres are zoned M2, for heavy industrial use.
- The Southern approximately 200 acres are zoned R-R for Residential Development.
- This property is heavily stocked with pine and hardwood timber.
- This property has a nice pond.
- There are two homes on the property.
- There are utilities available on the property.

Price: \$ 2,900,000.00

Contact: Eddie Carlson

334-270-1291 (Office)

334-201-5599 (Cell)

ecarlson@carlsonlandservices.com

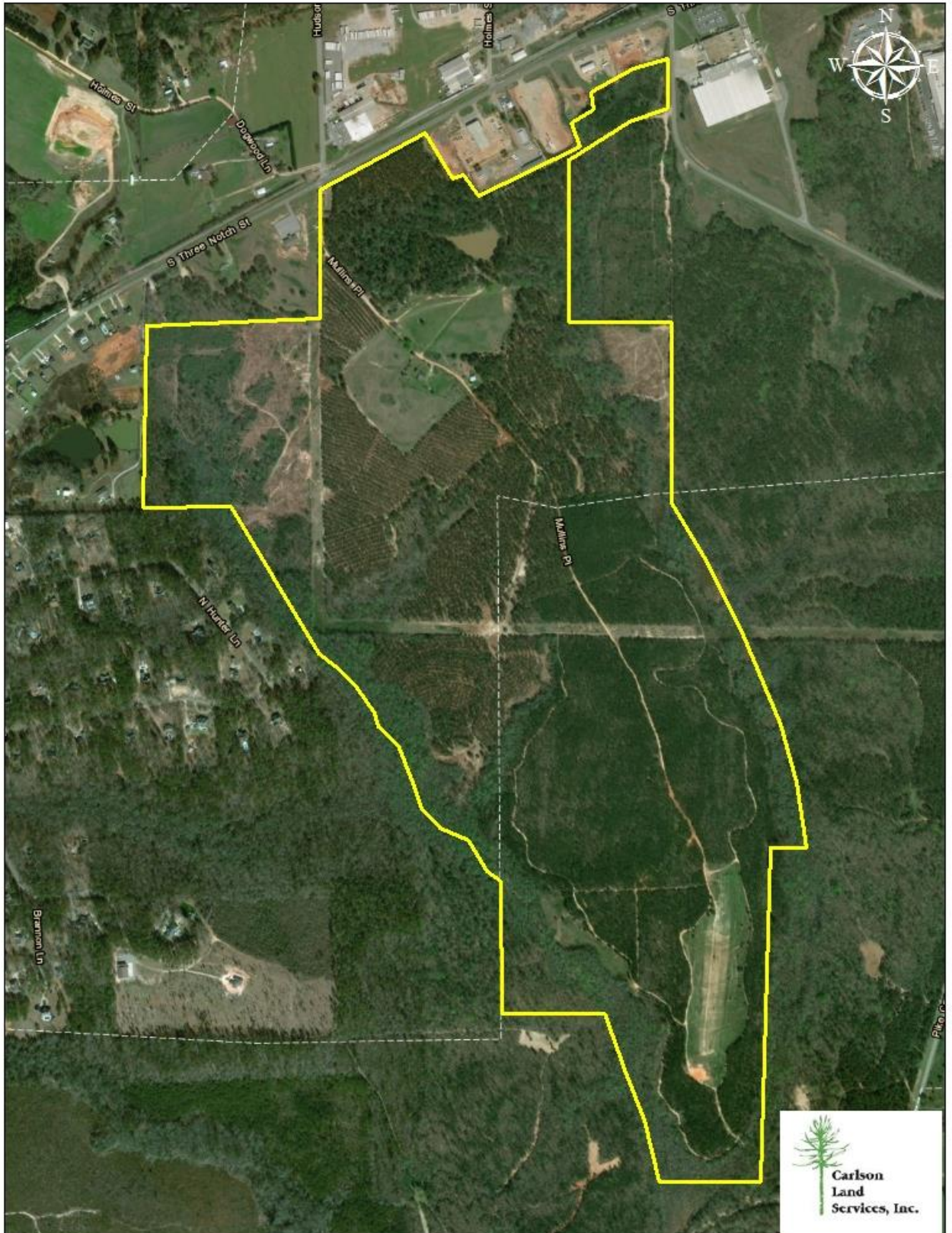
Driving Directions:

See maps. Shown by appointment only. Gates are locked- please call agent.



**Carlson
Land**

Services, Inc. POST OFFICE BOX 241272 – MONTGOMERY, ALABAMA 36124 – 334.270.1291

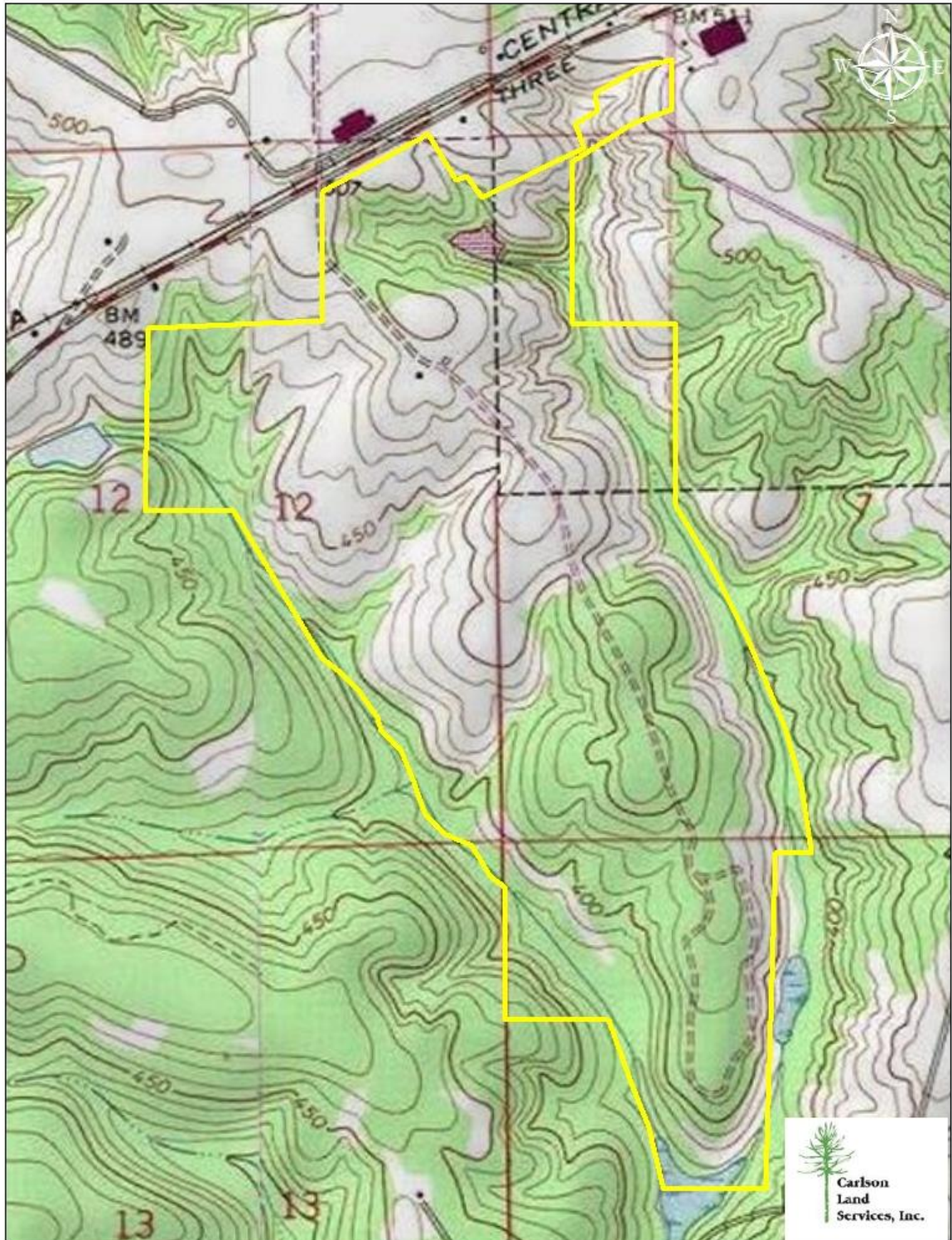


Wednesday



**Carlson
Land
Services, Inc.**

POST OFFICE BOX 241272 – MONTGOMERY, ALABAMA 36124 – 334.270.1291





**Carlson
Land**

Services, Inc. POST OFFICE BOX 241272 – MONTGOMERY, ALABAMA 36124 – 334.270.1291





**Carlson
Land**

Services, Inc. POST OFFICE BOX 241272 – MONTGOMERY, ALABAMA 36124 – 334.270.1291





**Carlson
Land**

Services, Inc. POST OFFICE BOX 241272 – MONTGOMERY, ALABAMA 36124 – 334.270.1291

