



**Carlson
Land
Services, Inc.**

Crenshaw County- 387 +/-acres – Leon Tract

Offered by:

Eddie Carlson

334-270-1291 (Office)

334-201-5599 (Cell)

<http://www.carlsonlandservices.com/>

ecarlson@carlsonlandservices.com



**Carlson
Land**

Services, Inc. POST OFFICE BOX 241272 – MONTGOMERY, ALABAMA 36124 – 334.270.1291

Crenshaw County – 387 acres +/-

Location: West of Brantley

This property features:

- 387 acres of beautiful land and timber.
- The property is heavily stocked with mature pine and hardwood timber and has an excellent internal road system.
- The property consists of 77 acres of hardwood timber, 202 acres of pre-merchantable pine plantations and 90 acres of older timber.
- The property types range from a small clear cut to heavily stocked stands of timber providing many habitat needs for wildlife.
- There is a large sand bottom creek that provides a great water source for wildlife.
- The property has excellent wildlife habitat and is home to deer, turkey, and many nongame species.
- The property has rolling topography.
- There are several green fields on the property.

Price: \$850,000.00

Contact: Eddie Carlson

334-270-1291 (Office)

334-201-5599 (Cell)

ecarlson@carlsonlandservices.com

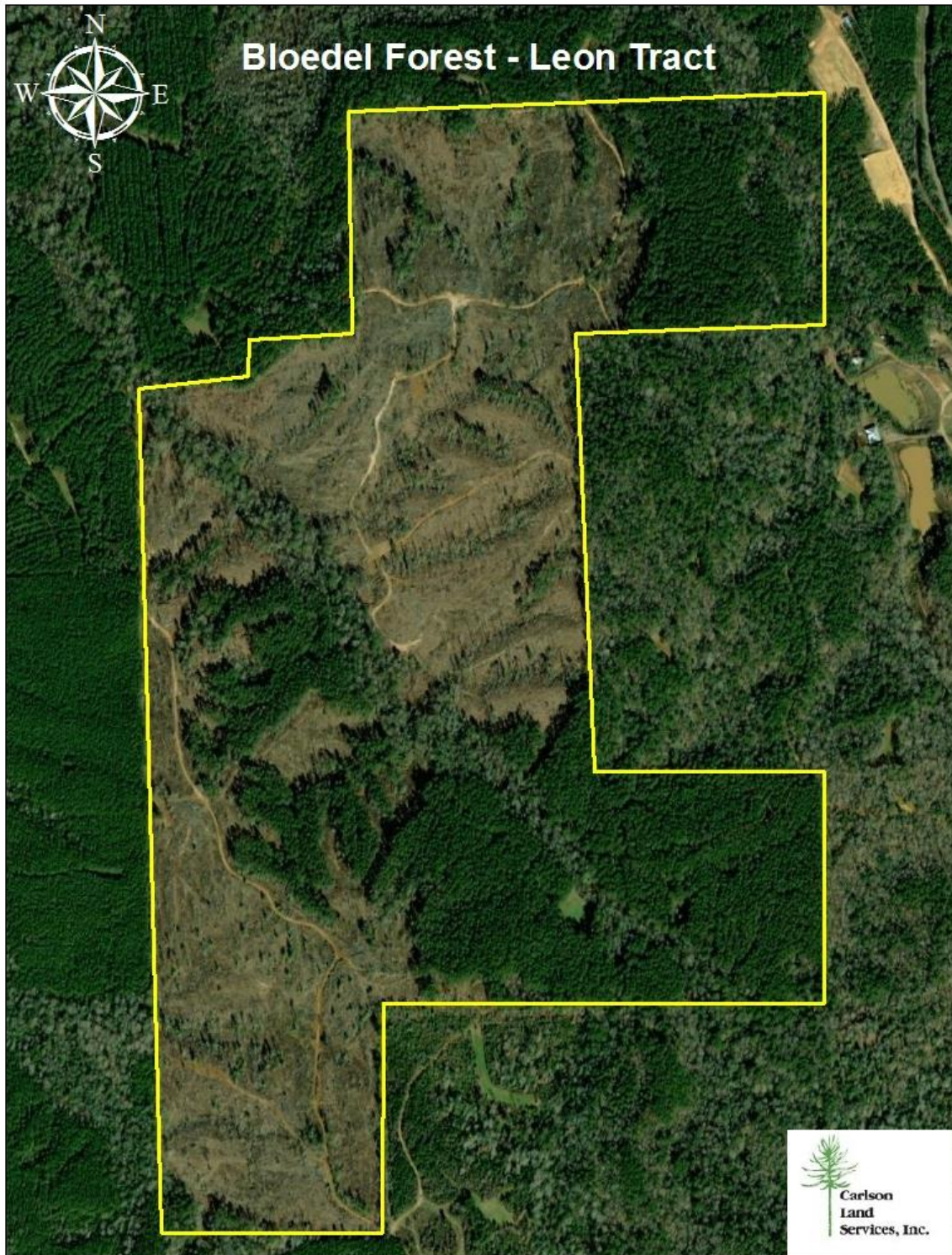
Driving Directions:

See maps. Shown by appointment only. Gates are locked- please call agent.



**Carlson
Land**

Services, Inc. POST OFFICE BOX 241272 – MONTGOMERY, ALABAMA 36124 – 334.270.1291



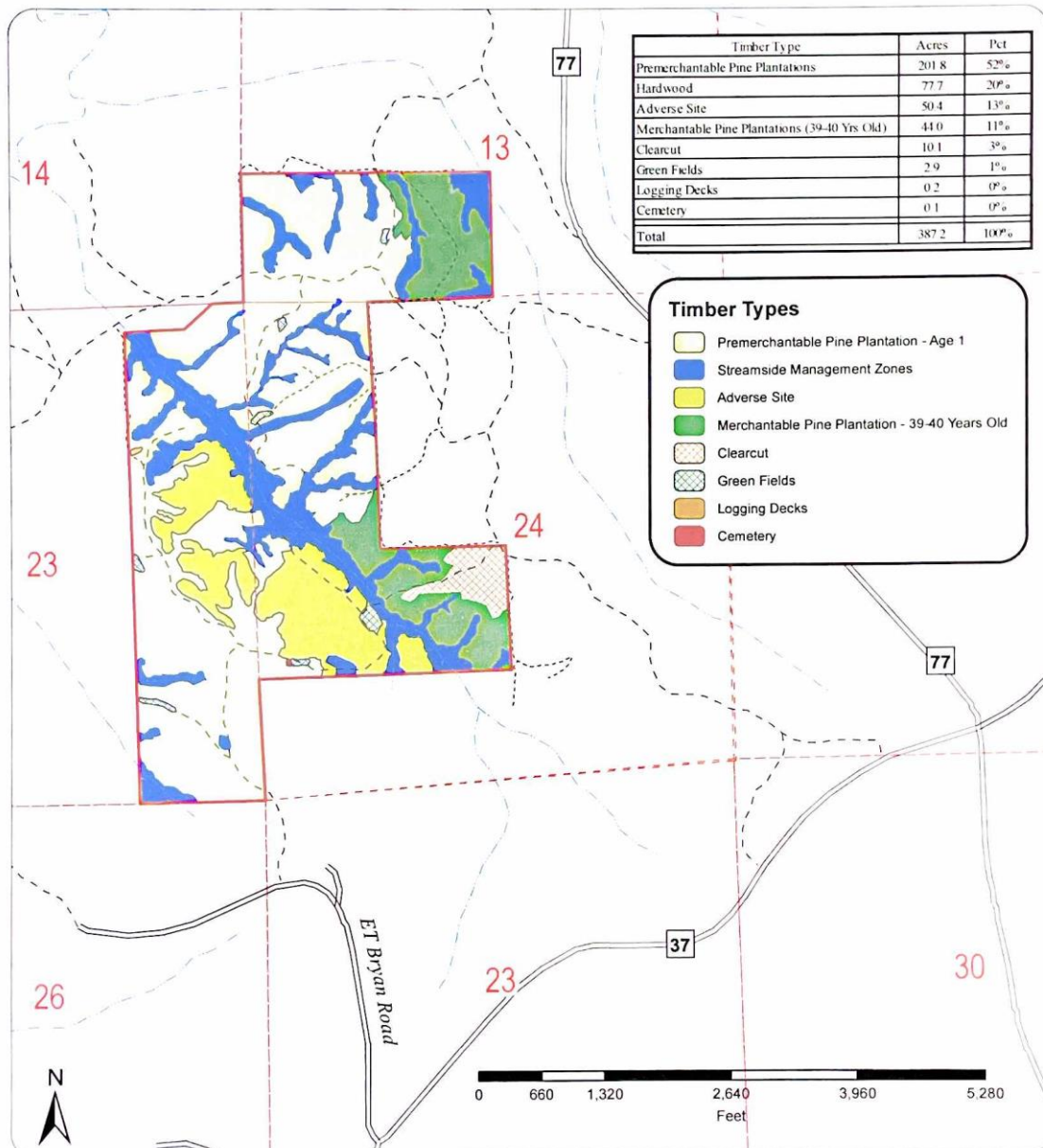


**Carlson
Land
Services, Inc.**

POST OFFICE BOX 241272 – MONTGOMERY, ALABAMA 36124 – 334.270.1291

**Bloedel Forest, Inc,
Leon Tract
Crenshaw County, Alabama
387 +/- Acres**

Sections 13, 23 & 24, T7N, R16E



This map is not warranted for completeness or accuracy. Acreage is calculated from aerial photographs and is not warranted by Bloedel Forest, Inc. Each buyer should make his own acreage determination.

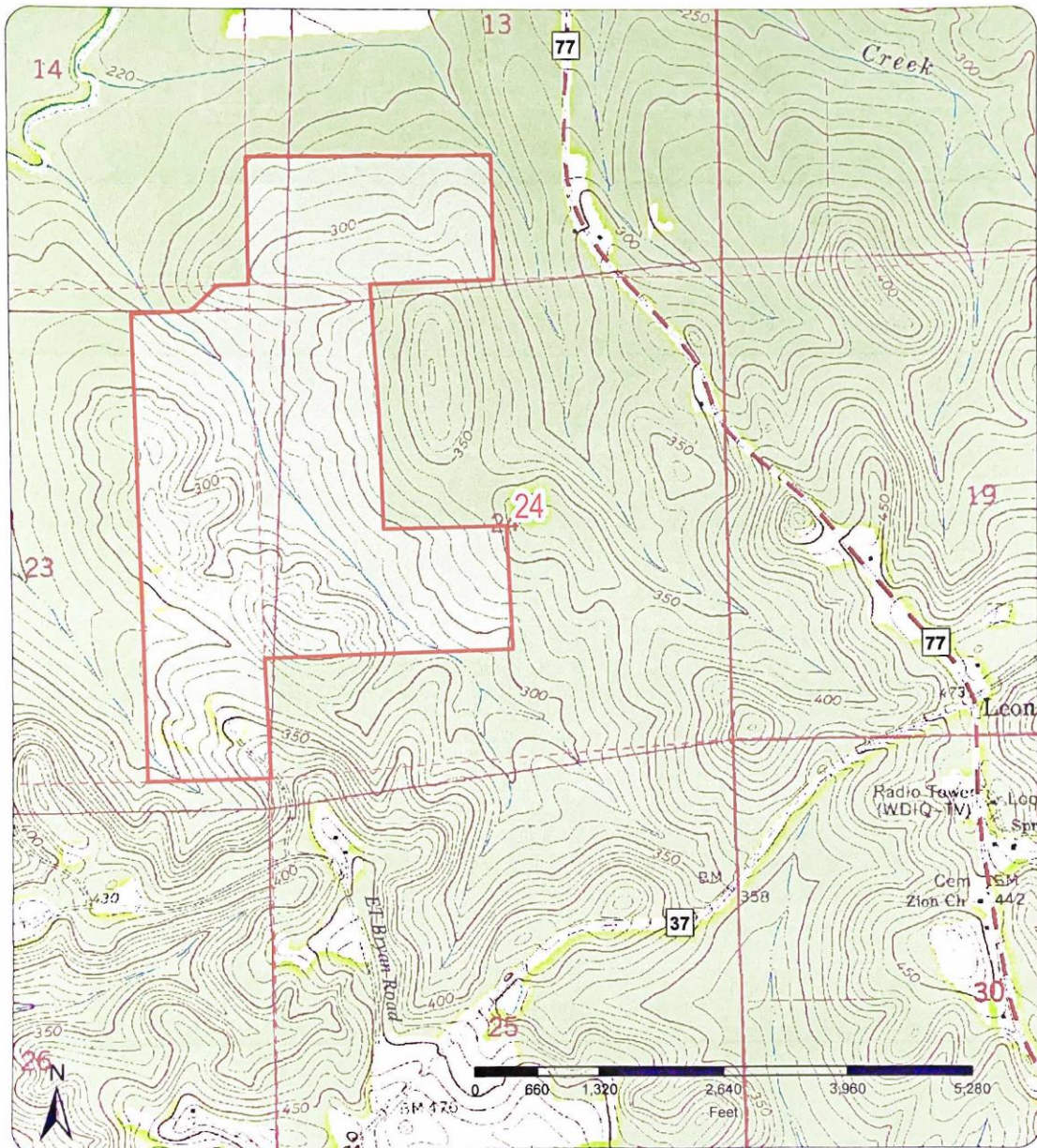


**Carlson
Land**

Services, Inc. POST OFFICE BOX 241272 – MONTGOMERY, ALABAMA 36124 – 334.270.1291

**Bloedel Forest, Inc.,
Leon Tract
Crenshaw County, Alabama
387 +/- Acres**

Sections 13, 23 & 24, T7N, R16E



This map is not warranted for completeness or accuracy. Acreage is calculated from aerial photographs and is not warranted by Bloedel Forest, Inc. Each buyer should make his own acreage determination.



**Carlson
Land**

Services, Inc. POST OFFICE BOX 241272 – MONTGOMERY, ALABAMA 36124 – 334.270.1291

