



## Crenshaw County- 774 +/-acres – Brantley Tract

---

*Offered by:*

Eddie Carlson

334-270-1291 (Office)

334-201-5599 (Cell)

<http://www.carlsonlandservices.com/>

[ecarlson@carlsonlandservices.com](mailto:ecarlson@carlsonlandservices.com)



**Carlson  
Land**

**Services, Inc.** POST OFFICE BOX 241272 – MONTGOMERY, ALABAMA 36124 – 334.270.1291

## Crenshaw County – 774 acres +/-

**Location:** Southwest of Brantley

### **This property features:**

- 774 acres of beautiful land and timber.
- The property is heavily stocked with mature pine and hardwood timber and has an excellent internal road system. The property has excellent wildlife habitat and is home to deer, turkey, and many nongame species.
- The property consists of 300 acres of hardwood timber, 200 acres of pre-merchantable pine plantations and 195 acres of merchantable pine plantations. The property has approximately 10 acres of hardwood regeneration and a recent clearcut of about 30 acres.
- There is an awesome duck pond that totals approximately 30 acres located in the center of the property.
- The property types range from a small clear cut to heavily stocked stands of timber providing many habitat needs for wildlife.
- There is a large creek that provides additional water for the wildlife.
- The property has flat topography.
- There are several green fields on the property.
- There is an old railroad bed on the property that provides excellent access.

**Price:** \$2,050,000.00

**Contact:** Eddie Carlson

334-270-1291 (Office)

334-201-5599 (Cell)

[ecarlson@carlsonlandservices.com](mailto:ecarlson@carlsonlandservices.com)

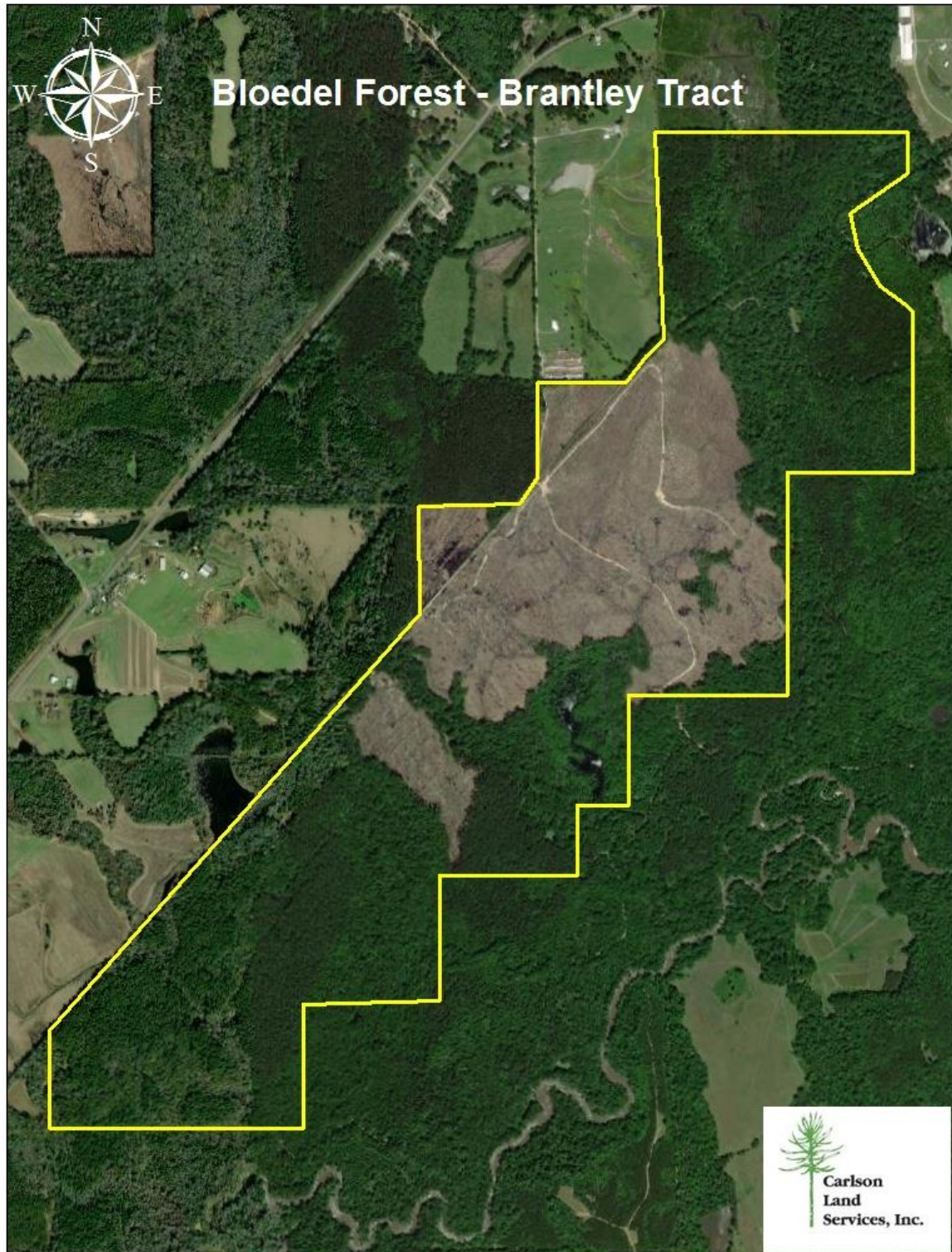
### **Driving Directions:**

See maps. Shown by appointment only. Gates are locked- please call agent.



**Carlson  
Land**

**Services, Inc.** POST OFFICE BOX 241272 – MONTGOMERY, ALABAMA 36124 – 334.270.1291



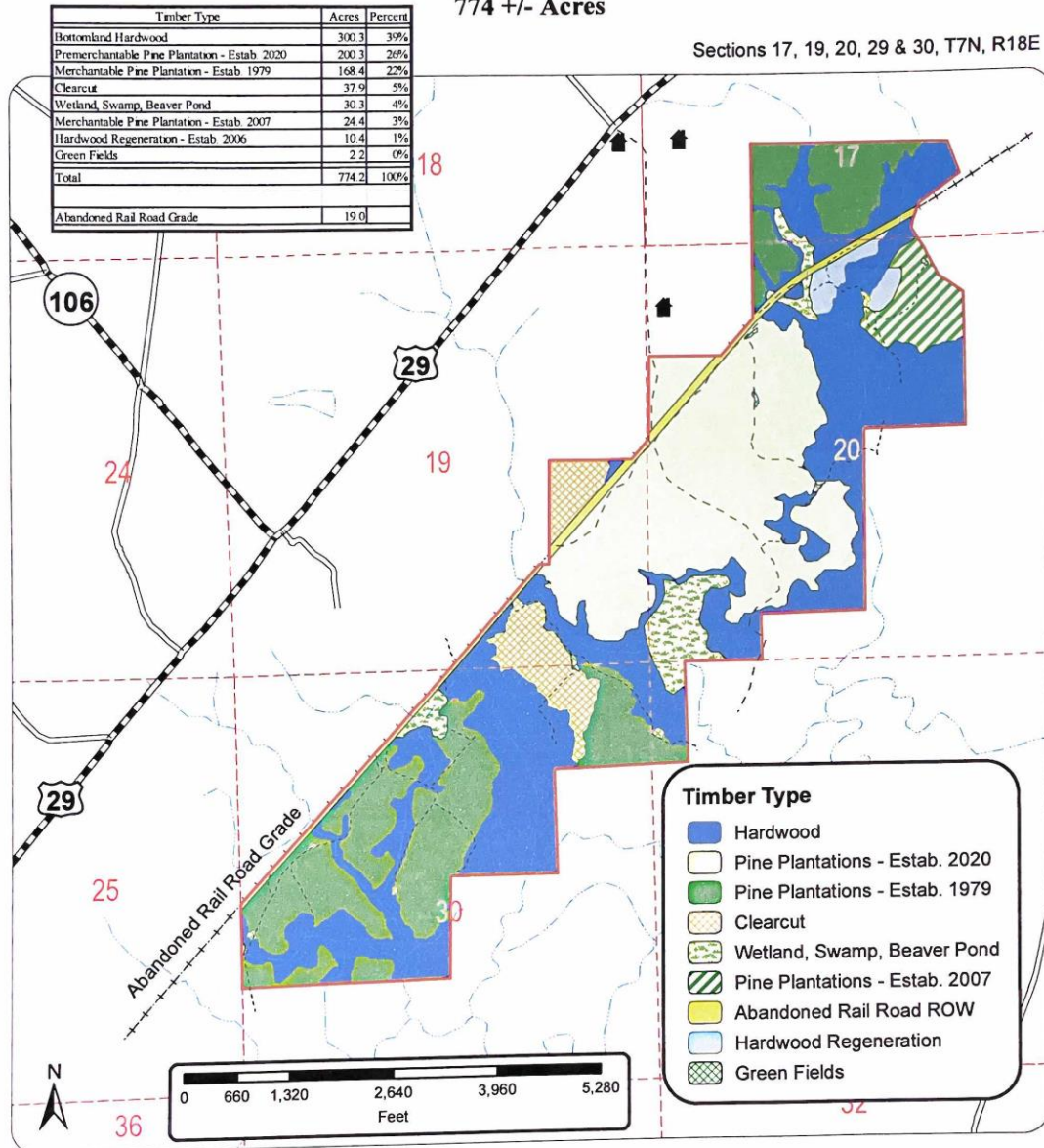




**Carlson  
Land**

**Services, Inc.** POST OFFICE BOX 241272 – MONTGOMERY, ALABAMA 36124 – 334.270.1291

**Bloedel Forest, Inc.  
Brantley Tract  
Crenshaw County, Alabama  
774 +/- Acres**



*This map is not warranted for completeness or accuracy. Acreage is calculated from aerial photographs and is not warranted by Bloedel Forest, Inc. Each buyer should make his own acreage determination.*

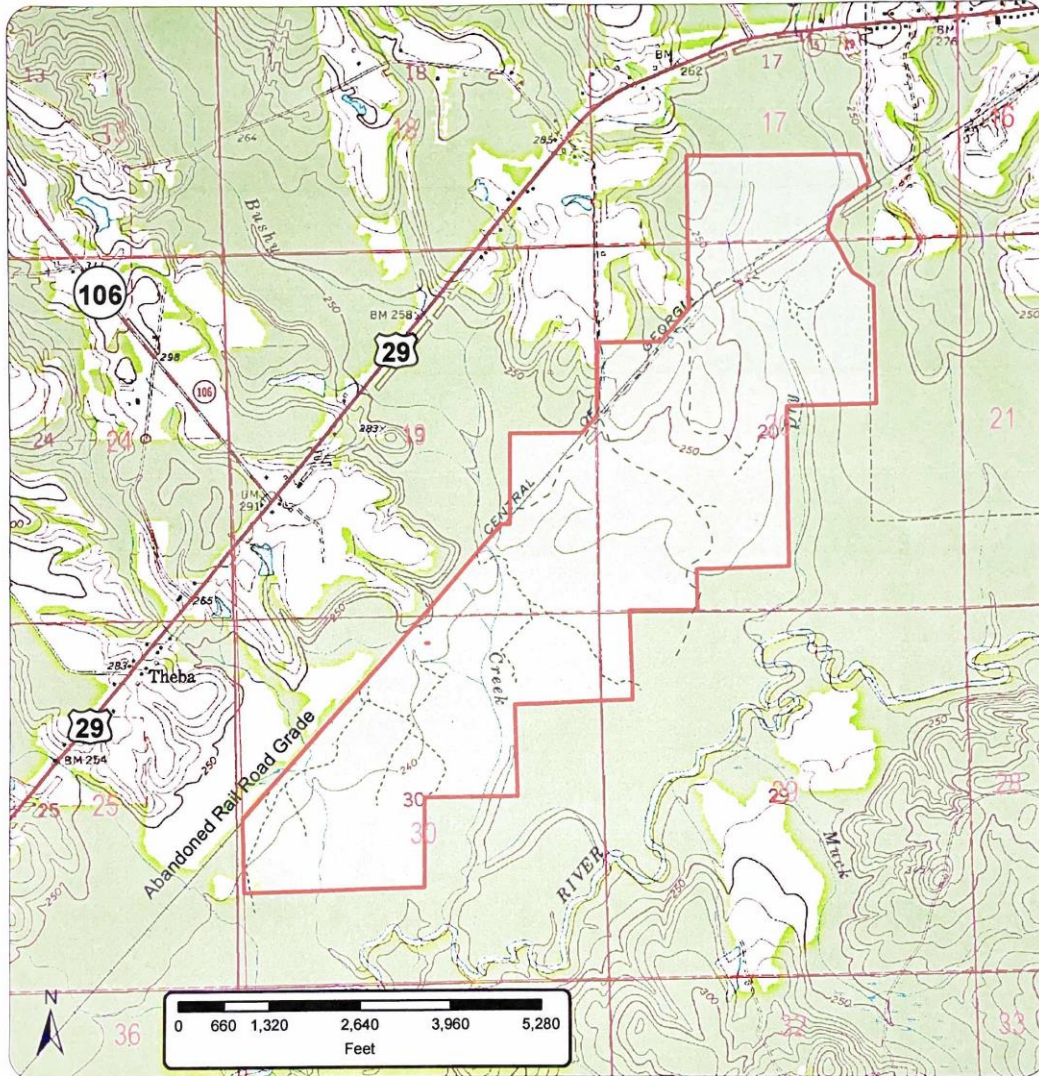


**Carlson  
Land**

**Services, Inc.** POST OFFICE BOX 241272 – MONTGOMERY, ALABAMA 36124 – 334.270.1291

**Bloedel Forest, Inc.  
Brantley Tract  
Crenshaw County, Alabama  
774 +/- Acres**

Sections 17, 19, 20, 29 & 30, T7N, R18E



*This map is not warranted for completeness or accuracy. Acreage is calculated from aerial photographs and is not warranted by Bloedel Forest, Inc. Each buyer should make his own acreage determination.*





**Carlson  
Land**

**Services, Inc.** POST OFFICE BOX 241272 – MONTGOMERY, ALABAMA 36124 – 334.270.1291

