



**Carlson  
Land  
Services, Inc.**

Butler County – 41 acres +/-

---

*Offered by:*

Luke Carlson

334-270-1291 (Office)

334-202-8577 (Cell)

<http://www.carlsonlandservices.com/>

[lcarlson@carlsonlandservices.com](mailto:lcarlson@carlsonlandservices.com)



POST OFFICE BOX 241272 – MONTGOMERY, ALABAMA 36124 – 334.270.1291

## Butler County – 41 acres +/-

**Location:** Halso Mill Road , Greenville, AL 36037

**This property features:**

- This beautiful 41 acre tract located SE of Greenville on Halso Mill Road is the perfect timber and hunting investment.
  - The property is home to turkeys and whitetail deer.
- This property is loaded with gorgeous natural pine and hardwood timber from corner to corner.
- The property is well situated for maximizing timber production while still being able to enjoy the recreational aspects of owning land.

**Price:** \$ 155,800.00

**Contact:** Luke Carlson  
334-270-1291 (Office)  
334-202-8577 (Cell)  
[lcarlson@carlsonlandservices.com](mailto:lcarlson@carlsonlandservices.com)

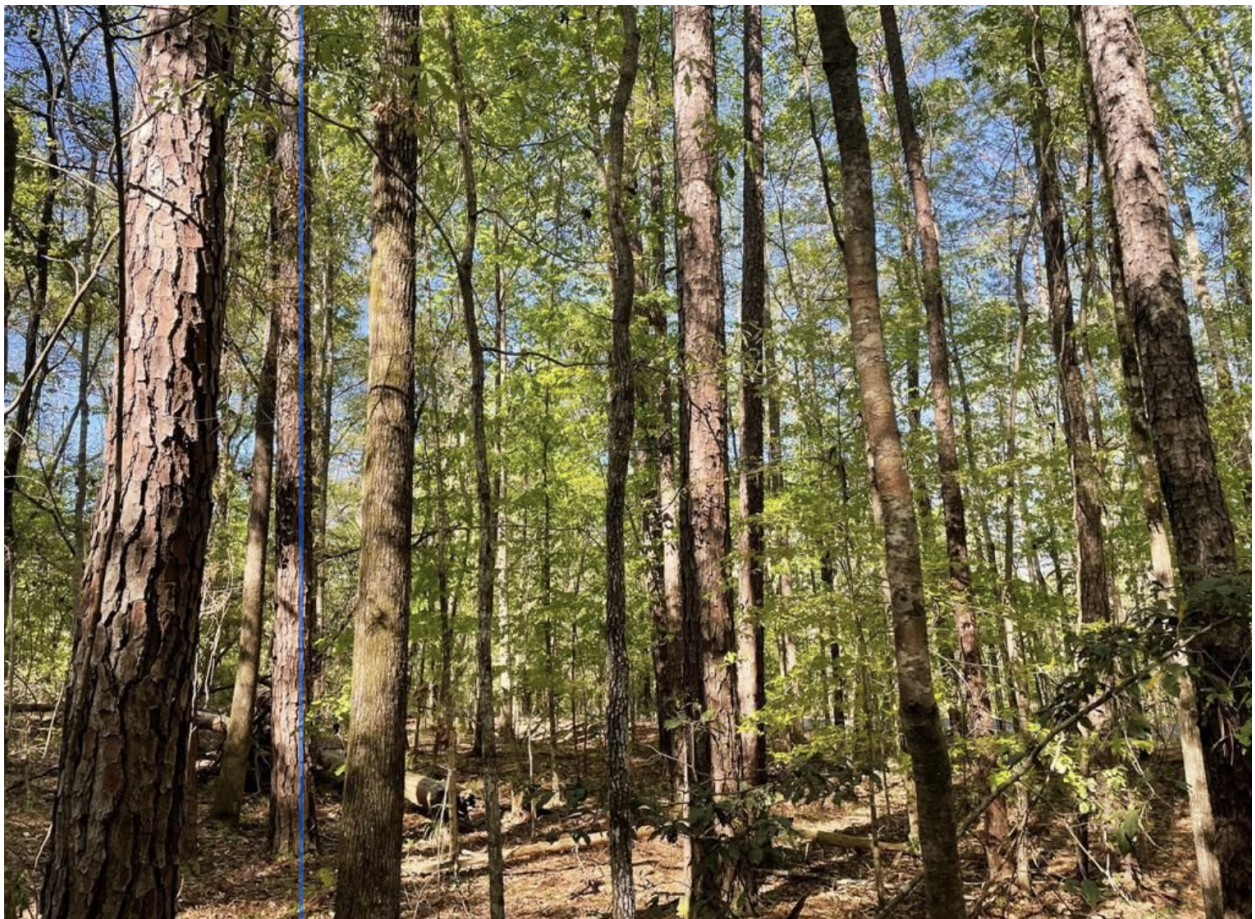
**Driving Directions:**

See maps. Shown by appointment only. Gates are locked- please call agent.





POST OFFICE BOX 241272 – MONTGOMERY, ALABAMA 36124 – 334.270.1291







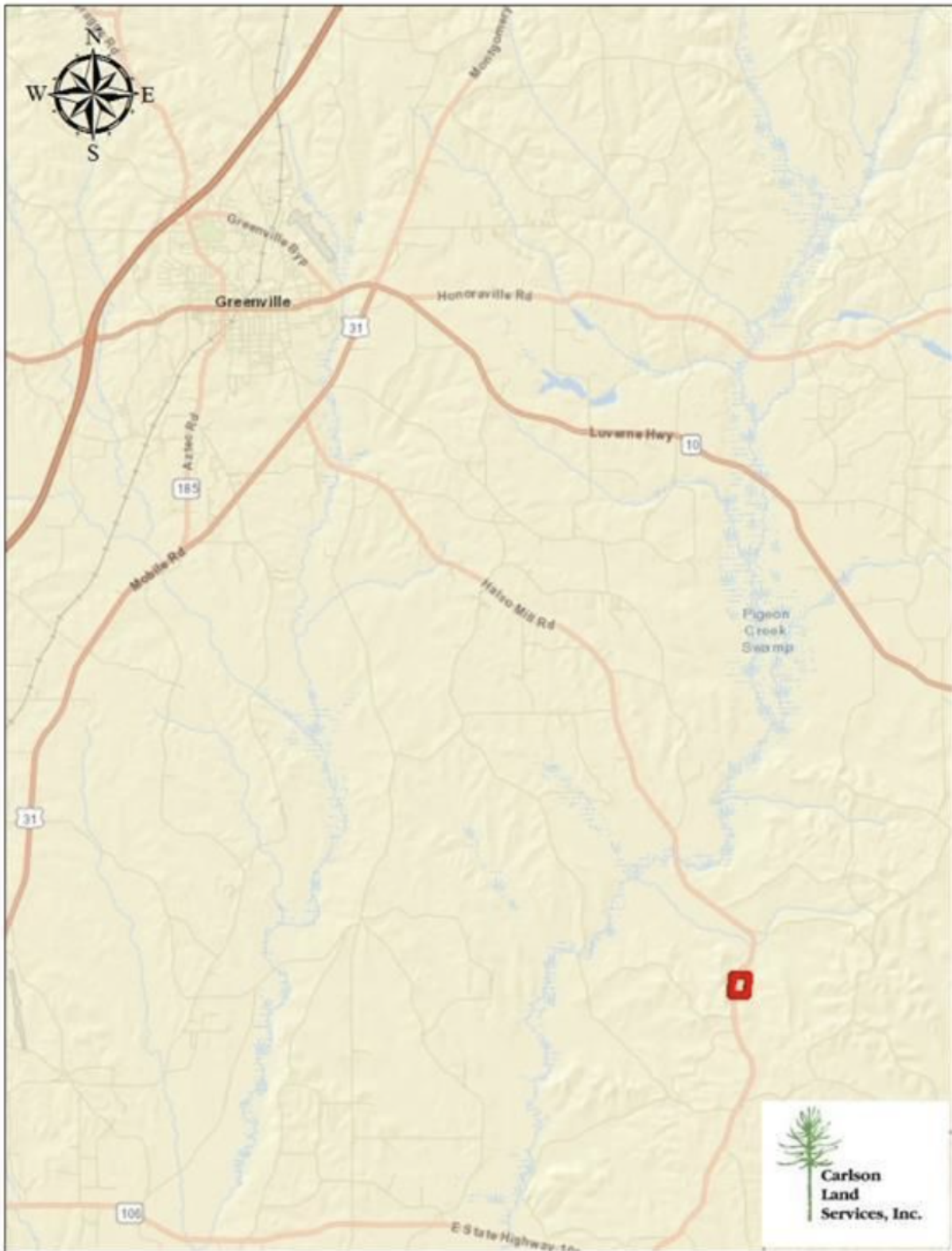
POST OFFICE BOX 241272 – MONTGOMERY, ALABAMA 36124 – 334.270.1291







POST OFFICE BOX 241272 – MONTGOMERY, ALABAMA 36124 – 334.270.1291





POST OFFICE BOX 241272 – MONTGOMERY, ALABAMA 36124 – 334.270.1291

