



**Carlson
Land
Services, Inc.**

Montgomery County – 180.58 acres +/-

Offered by:

Eddie Carlson

334-270-1291 (Office)

334-201-5599 (Cell)

<http://www.carlsonlandservices.com/>

ecarlson@carlsonlandservices.com



POST OFFICE BOX 241272 – MONTGOMERY, ALABAMA 36124 – 334.270.1291

Montgomery County – 180.54 acres +/-

Location: Ramer Grady, Pine Level (South Montgomery County)

This property features:

- 180 acres of beautiful land and timber.
- The property is heavily stocked with loblolly pines that are 5-6 years old.
- The property has excellent wildlife habitat and is home to deer, turkey, and many nongame species. There are two food plots on the property and an excellent pond site.
- The property has gently rolling topography.
- The property has more than 2,300 feet of paved road frontage on Gardner Road and over 900 feet of paved road frontage on Pisgah Road.
- This property would make an excellent timber investment, hunting or recreational property and homesite.

Price: \$532,711.00

Contact: Eddie Carlson
334-270-1291 (Office)
334-201-5599 (Cell)
bezelle@carlsonlandservices.com

Driving Directions:

See maps. Shown by appointment only. Gates are locked- please call agent.



POST OFFICE BOX 241272 – MONTGOMERY, ALABAMA 36124 – 334.270.1291





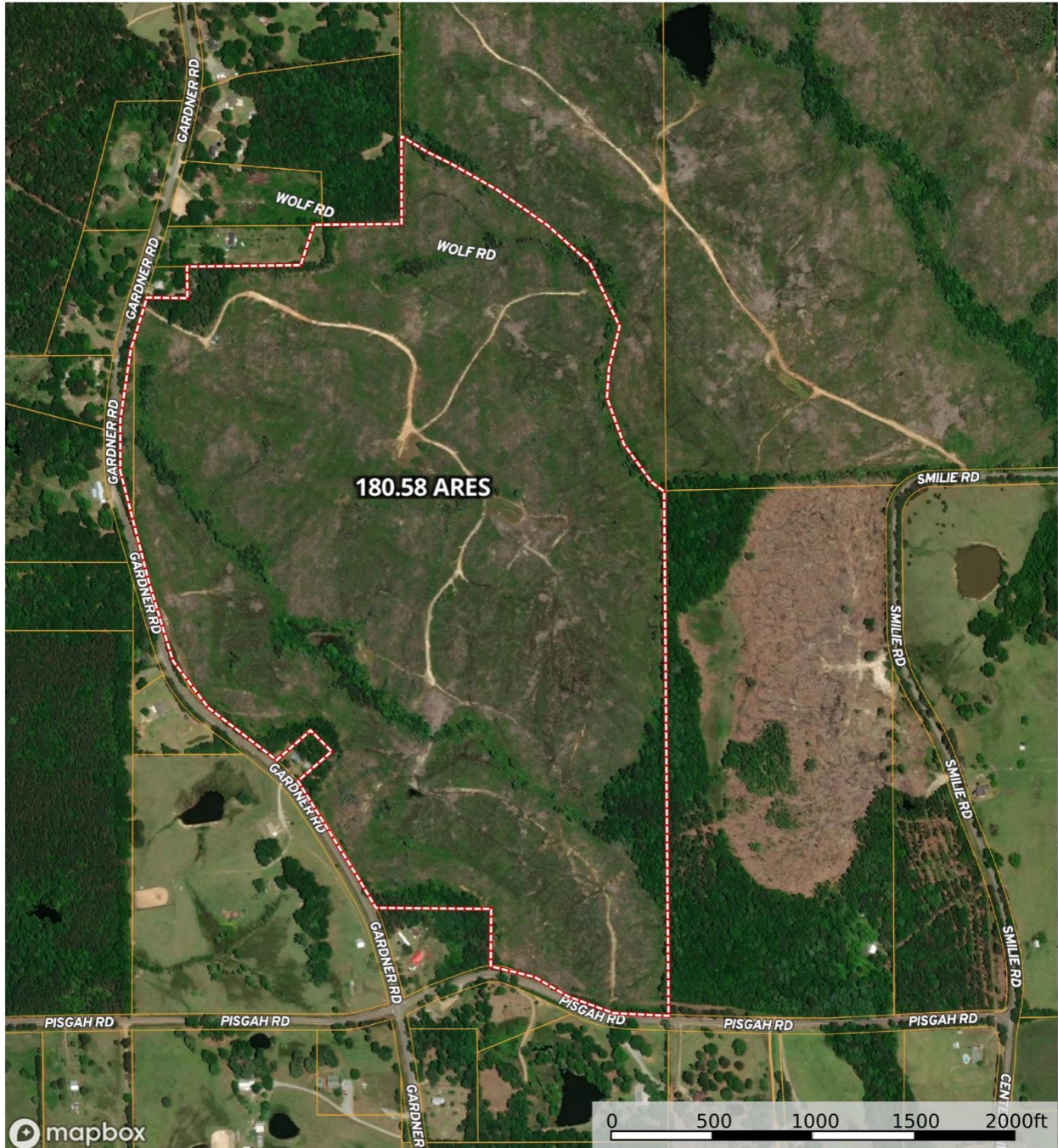
POST OFFICE BOX 241272 – MONTGOMERY, ALABAMA 36124 – 334.270.1291





POST OFFICE BOX 241272 – MONTGOMERY, ALABAMA 36124 – 334.270.1291

Gardner Road
Alabama, AC +/-

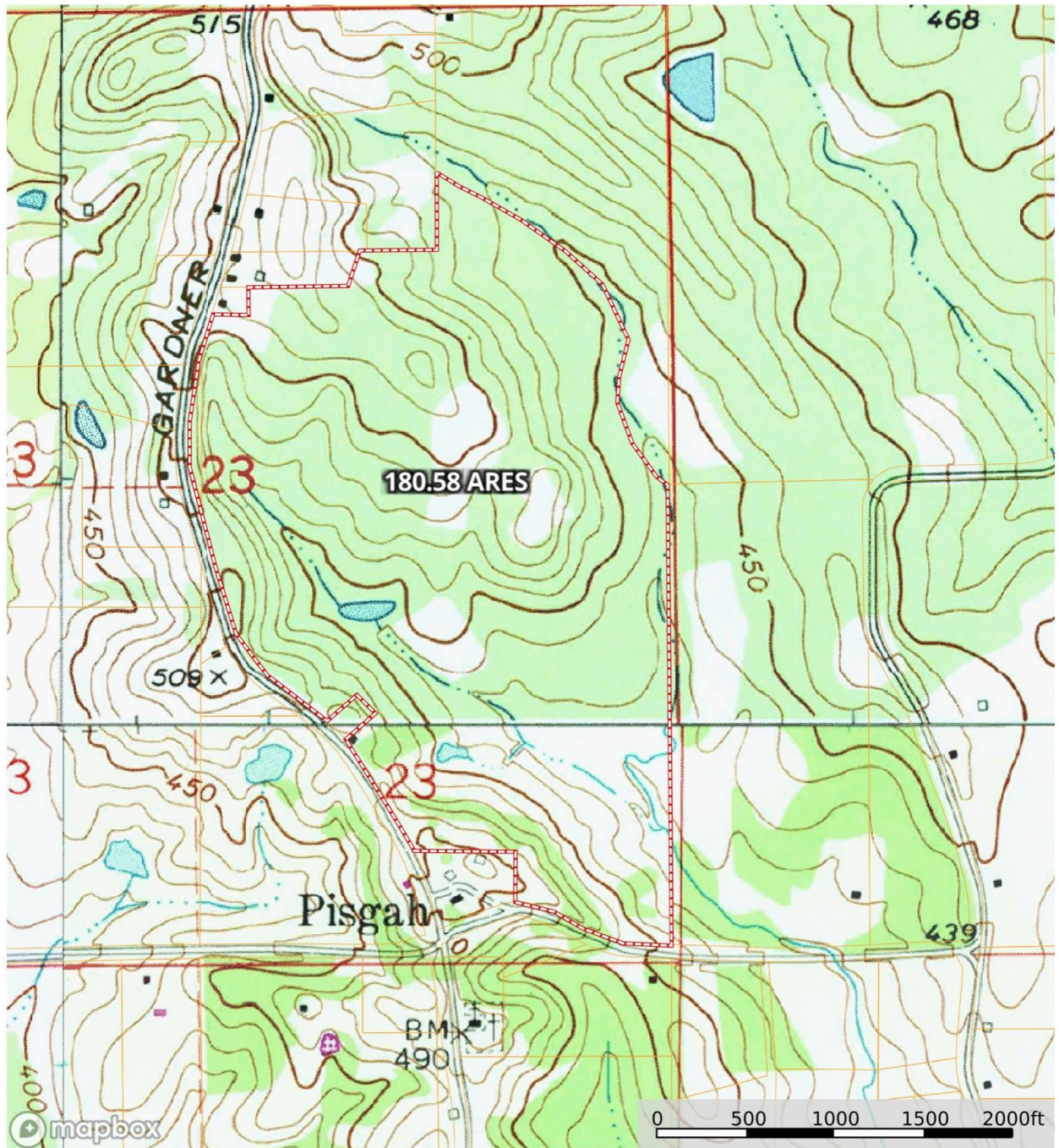


Boundary



POST OFFICE BOX 241272 – MONTGOMERY, ALABAMA 36124 – 334.270.1291

Gardner Road
Alabama, AC +/-



Boundary