



**Carlson
Land
Services, Inc.**

Montgomery County- 20 +/-acres –

Offered by:

Eddie Carlson

334-270-1291 (Office)

334-201-5599 (Cell)

<http://www.carlsonlandservices.com/>

ecarlson@carlsonlandservices.com



**Carlson
Land**

Services, Inc. POST OFFICE BOX 241272 – MONTGOMERY, ALABAMA 36124 – 334.270.1291

Montgomery County – 20 acres +/-

Location: On Old McGehee Road Just west of Butler Mill Road in Snoudown

This property features:

- 20 acres of beautiful rolling pasture land with large scattered hardwood trees.
- The property has many beautiful homesites.
- The property has approximately 650 feet of road frontage on Old McGehee Road
- The property is currently being used as a hayfield.
- Utilities are available to the property.

Price: \$180,000.00

Contact: Eddie Carlson

334-270-1291 (Office)

334-201-5599 (Cell)

ecarlson@carlsonlandservices.com

Driving Directions:

See maps. Shown by appointment only. Gates are locked- please call agent.



**Carlson
Land**

Services, Inc. POST OFFICE BOX 241272 – MONTGOMERY, ALABAMA 36124 – 334.270.1291





**Carlson
Land**

Services, Inc. POST OFFICE BOX 241272 – MONTGOMERY, ALABAMA 36124 – 334.270.1291





**Carlson
Land**

Services, Inc. POST OFFICE BOX 241272 – MONTGOMERY, ALABAMA 36124 – 334.270.1291



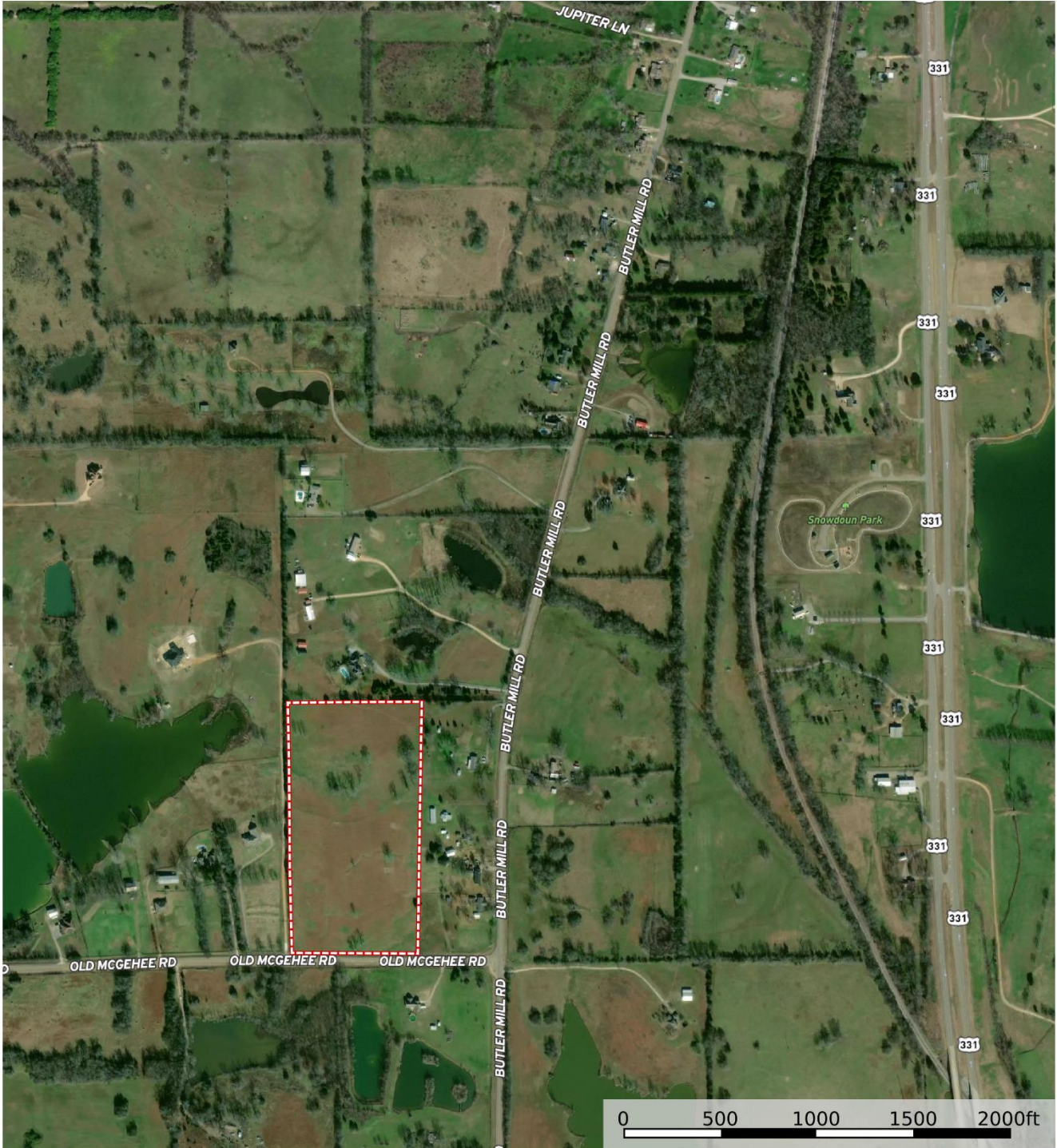


**Carlson
Land
Services, Inc.**

POST OFFICE BOX 241272 – MONTGOMERY, ALABAMA 36124 – 334.270.1291

Montgomery County-20 acres


Montgomery County, Alabama, 20 AC +/-



 Boundary

V

Eddie Carlson

 The information contained herein was obtained from sources deemed to be reliable. Land id™ Services makes no warranties or guarantees as to the completeness or accuracy thereof.



**Carlson
Land**

Services, Inc. POST OFFICE BOX 241272 – MONTGOMERY, ALABAMA 36124 – 334.270.1291

