



Montgomery County- 47 +/-acres –

Offered by:

Luke Carlson

334-270-1291 (Office)

334-202-8577 (Cell)

<http://www.carlsonlandservices.com/>

lcarlson@carlsonlandservices.com



**Carlson
Land**

Services, Inc. POST OFFICE BOX 241272 – MONTGOMERY, ALABAMA 36124 – 334.270.1291

Montgomery County – 47 acres +/-

Location: Orion, AL

Take a look at this beautiful 47 acre tract located in south Montgomery County in the Orion community. The property is well situated on a major intersection along the highway 231 corridor with approximately 1,500 feet of frontage on the Troy Highway and over 1,300 feet of paved road frontage on Montgomery County Road 305. There is excellent high elevation at this intersection making the property ideal for commercial or industrial use. This high visibility corner has 15,000 to 20,000 cars pass by every day.

The land has gentle rolling topography with a mixture of mature pine and hardwood timber. There are several established food plots as well as evidence of a healthy deer and turkey population. This property would also make a great home site for someone wanting to be located between Montgomery and Troy with easy access on Highway 231. To learn more about this property give Luke Carlson with Carlson Land Services a call today!

Price: \$352,500.00

Contact: Luke Carlson

334-270-1291 (Office)

334-202-8577 (Cell)

lcarlson@carlsonlandservices.com

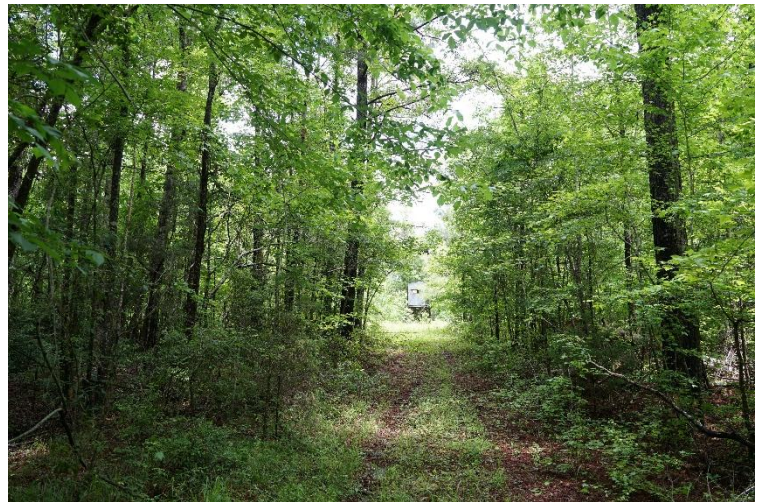
Driving Directions:

See maps. Shown by appointment only. Gates are locked- please call agent.



**Carlson
Land**

Services, Inc. POST OFFICE BOX 241272 – MONTGOMERY, ALABAMA 36124 – 334.270.1291





**Carlson
Land
Services, Inc.**

POST OFFICE BOX 241272 – MONTGOMERY, ALABAMA 36124 – 334.270.1291

